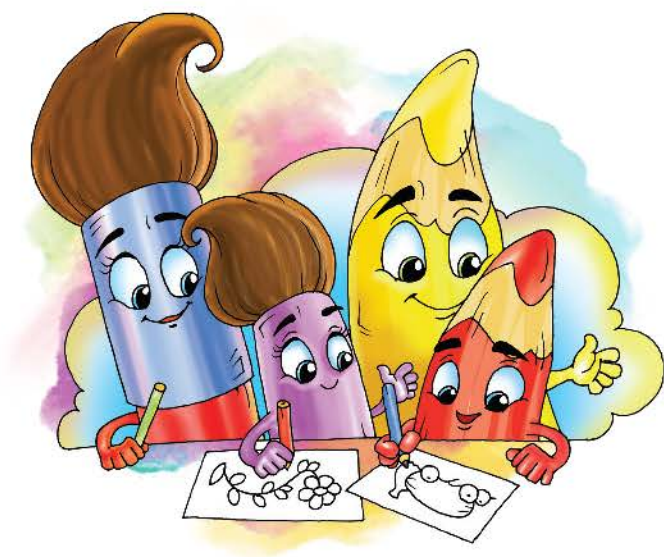


Tasviriy san'at 2

Umumiy o'рта ta'lim maktablarining
2-sinfi uchun darslik

*O'zbekiston Respublikasi Xalq ta'limi vazirligi
nashrga tavsiya etgan*

Yangi nashr



Toshkent – 2021

UO'K 75(075.3)
KBK 74.268.51
M 33

Tuzuvchilar:

Kudrat Miraxmedov, Barno Yunusova, Nurmon Berdiyev

Mas'ul muharrir:

Asqarali Sulaymonov

Taqrizchilar:

Rustam Xudayberganov – Kamoliddin Behzod nomidagi milliy rassomlik va dizayn instituti professori, O'zbekiston xalq rassomi.

Ziyodilla Bobomurodov – Toshkent arxitektura-qurilish instituti tasviriy san'at kafedrasida mudiri, dotsent.

Dilshod Xaytmetov – Kamoliddin Behzod nomidagi milliy rassomlik va dizayn instituti badiiy kulolchilik va me'moriy yodgorliklar bezagini ta'mirlash kafedrasida mudiri.

Noila Vahobova – Toshkent shahri Yangihayot tumanidagi 32-sonli umumiy o'rta ta'lim maktabining tasviriy san'at va chizmachilik fani o'qituvchisi.

Madina Abdumavlyanova – Toshkent shahri Yunusobod tumanidagi 63-sonli umumiy o'rta ta'lim maktabining tasviriy san'at va chizmachilik fani o'qituvchisi.

Shartli belgilar:



– o'rganamiz!



– dars yakuni



– topshiriq



– uyga vazifa



– savollar



– bo'yalmasin

*Respublika maqsadli kitob jamg'armasi
mablag'lari hisobidan chop etildi.*

*Original maket va dizayn konsepsiyasi
Respublika ta'lim markazi tomonidan ishlandi.*

Mundarija



3-BOB. RANGTASVIR

Kirish.....4

1-BOB. GRAFIKA

1-mavzu. Oq va qora rangda panda rasmini chizish.....6
2-mavzu. Toshbaqa rasmini chizish.....8
3-mavzu. Chumchuq rasmini chizish.....10
4-mavzu. Barglardan yo'lsimon naqsh chizish.....12
5-mavzu. "Kuzgi gullar" mavzusida rasm chizish.....14
6-mavzu. "Behi va nok" mavzusida rasm chizish.....16
7-mavzu. "Daraxtlarning kuzgi ko'rinishi" mavzusida rasm chizish.....18
8-mavzu. 1-nazorat ishi. "Kuz manzarasi" mavzusida rasm chizish.....20
9-mavzu. "Yomg'ir yog'moqda" mavzusida rasm chizish.....21

2-BOB. HAYKALTAROSHLIK

10-mavzu. "Quvnoq sakkizoyoqchalar" haykalchalarini yasash.....26
11-mavzu. "Dengiz yulduzi" haykalchasini bo'rtma usulda ishlash.....28
12-mavzu. "Qisqichbaqa" haykalchasini yasash.....30
13-mavzu. "Dengiz otchasi" haykalchasini yasash.....32
14-mavzu. "Oltin baliqcha" haykalchasini yasash.....34
15-mavzu. 2-nazorat ishi. "Suvosti saltanati" mavzusida bo'rtma usulda tasvir ishlash.....36
16-mavzu. "Delfin" haykalchasini yasash.....37

17-mavzu. "Vatanimga xizmat qilaman" mavzusida rasm ishlash.....42
18-mavzu. Ranglar mo'jizasi.....44
19-mavzu. "Qor parchalari" rasmini ishlash.....46
20-mavzu. "Qish manzarasi" mavzusida rasm ishlash.....48
21-mavzu. "Qishki naqshlar" mavzusida rasm ishlash.....50
22-mavzu. Oygul va barglardan iborat elementlar asosida naqsh ishlash.....52
23-mavzu. "O'rik gullaganda" mavzusida rasm ishlash.....54
24-mavzu. "Bahorgi gullar" mavzusida rasm ishlash.....56
25-mavzu. 3-nazorat ishi. "Go'zal bahor tabiati" mavzusida rasm ishlash.....58
26-mavzu. "Gullar olamiga sayohat" mavzusida rasm ishlash.....59

4-BOB. KOMPOZITSIYA

27-mavzu. "Svetofor" mavzusida kompozitsiya ishlash.....64
28-mavzu. "Velosipedchi" mavzusida kompozitsiya ishlash.....66
29-mavzu. "Chorrahadagi avtomobil" mavzusida kompozitsiya ishlash.....68
30-mavzu. "Yuk mashinasi" mavzusida kompozitsiya ishlash.....70
31-mavzu. "Vertolyot va samolyotlar parvozi" mavzusida kompozitsiya ishlash.....72
32-mavzu. "Dengiz kemalari" mavzusida kompozitsiya ishlash.....74
33-mavzu. 4-nazorat ishi. "Transport" mavzusida kompozitsiya ishlash.....76
34-mavzu. "Mening ta'tildagi sayohatim" mavzusida kompozitsiya ishlash.....77

KIRISH

Qadrli o'quvchilar! Siz 1-sinfda "Tasviriy san'at" darsligi orqali "Grafika", "Haykaltaroshlik", "Rangtasvir" va "Kompozitsiya" mavzulari bo'yicha boshlang'ich ma'lumotlarni o'rgandingiz. Tasvir ishlash, shakllarga rang berish, loy va plastilindan hayvonlar shaklini yasash bo'yicha amaliy ko'nikmalarni egalladingiz.

2-sinfda ham qiziqarli mavzularni o'rganish bilan birga rasm va haykal ishlash bo'yicha yangi ko'nikmalarni hosil qilasiz.





1 - bob GRAFIKA

Grafika – tasviriy san’at turi. Grafikada tasvir asosan oq-qora, shuningdek, rangli ishlanadi.



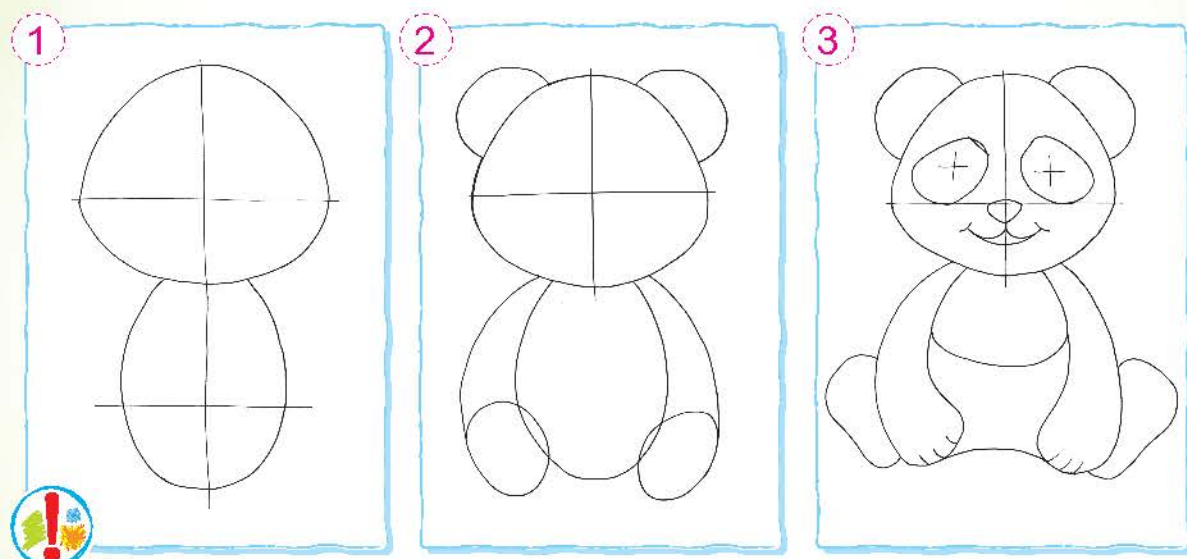
1-MAVZU

OQ VA QORA RANGDA PANDA RASMINI CHIZISH

Panda Xitoyda yashaydi. Uning bo'yi 1,2–1,5 metrgacha, vazni 17–160 kg atrofida bo'ladi. U bambuk va o'simliklar bilan oziqlanadi.



Panda tasvirini ketma-ketlik asosida chizing



Panda tasvirini mashq daftariga ketma-ketlik asosida chizing.



1. Panda qayerda yashaydi?
2. Panda tasvirini chizishda qanday geometrik shakldan foydalanamiz?



Pandani grafika usulida chizib, yakunlang.



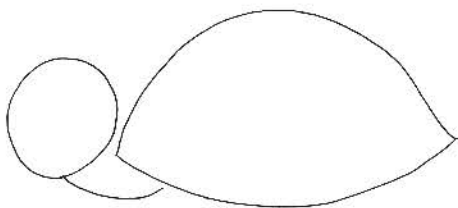


Toshbaqalar quruqlik va suvda yashaydi. Terisining rangi tug'ilgan va yashaydigan joyiga bog'liq. U yashil, jigarrang yoki notekis sariq dog'li ham bo'lishi mumkin.

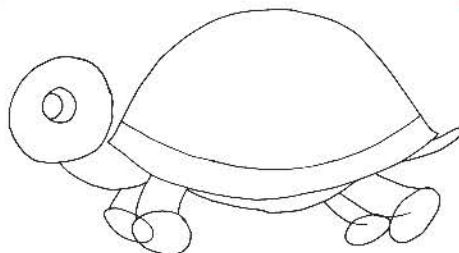


Toshbaqa tasvirini chizish bosqichlari

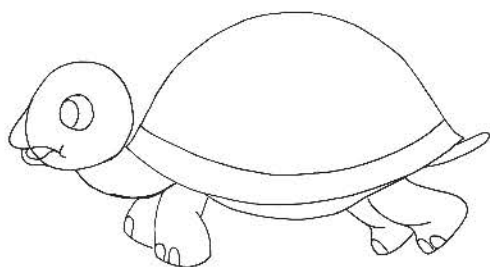
1



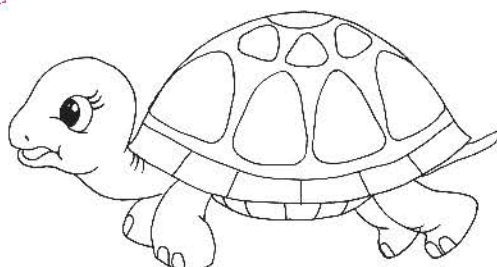
2



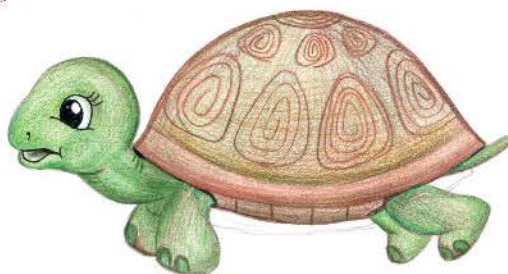
3



4



5



Toshbaqa tasvirini mashq daftari-
ga ketma-ketlik asosida chizing.



1. Toshbaqa haqida qiziqarli ma'lumot toping.
2. Toshbaqa surati qanday shakllardan tashkil topadi?



Toshbaqa rasmini grafika usulida chizib,
yakunlang.



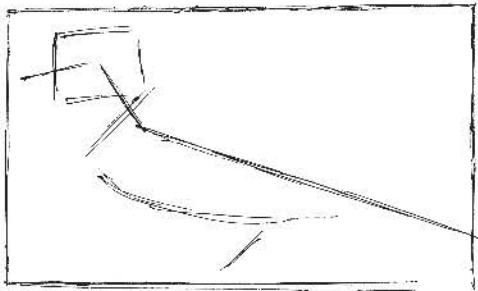


Chumchuq – kichkina qush. Og'irligi 35 grammdan oshmaydi. Uzunligi 16 cm atrofida. Chumchuqlar asosan hasharotlar bilan oziqlanadi.

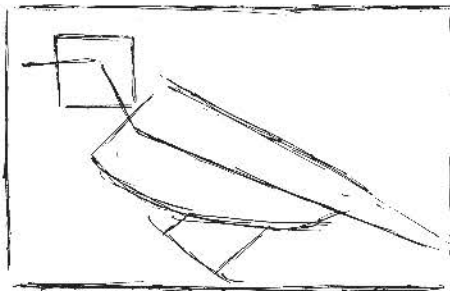


Chumchuq tasvirini ishlash ketma-ketligi

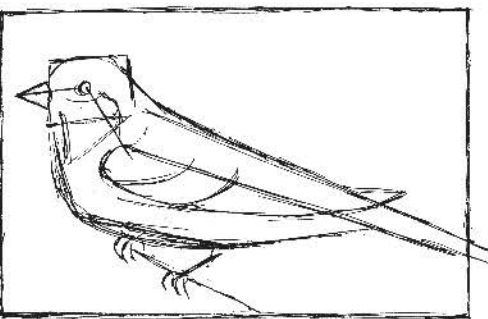
1



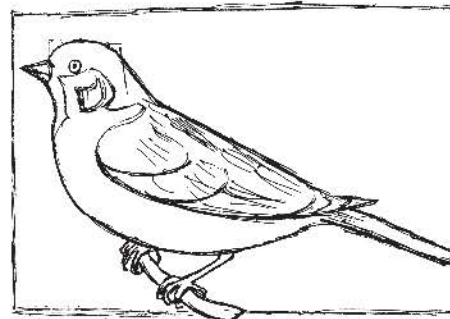
2



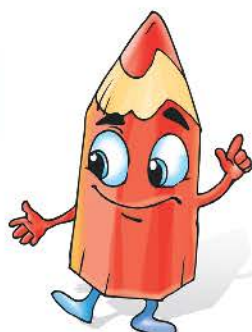
3



4



5



Chumchuq tasvirini mashq daftoriga ketma-ketlik asosida chizing.



Chumchuq tasviri qanday shakllardan tashkil topadi?

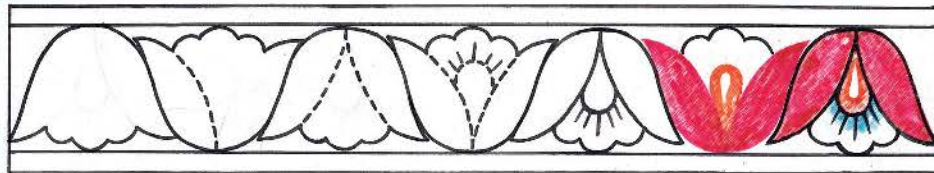
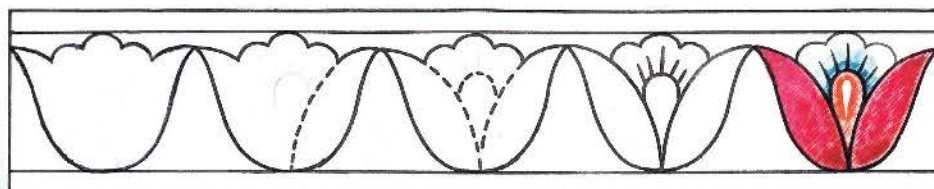


Daraxt shoxidagi chumchuq suratini chizishni ish qurollaridan foydalanib yakunlang.

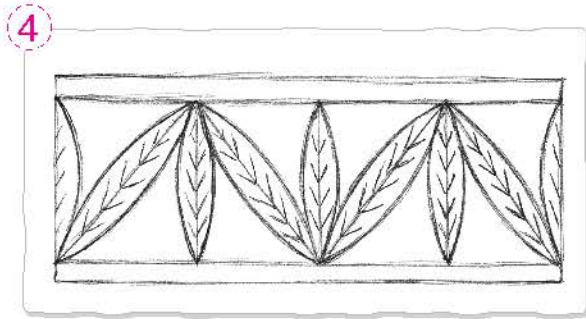
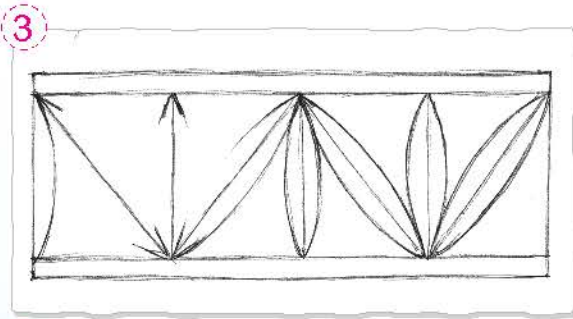
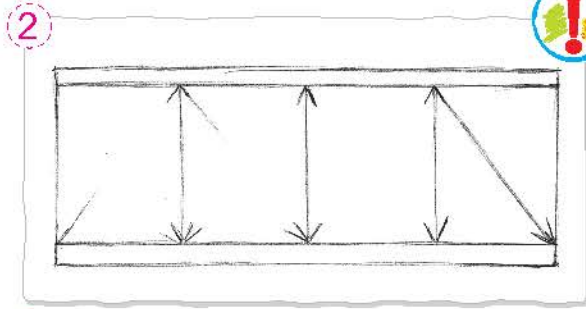
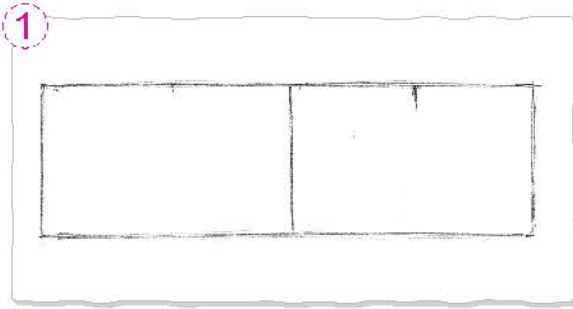




Naqqoshlik – amaliy san'atning qadimiy turi. U o'zbek xalq amaliy bezak san'atining eng jozibali va nafis turlaridan biri. Naqsh “gul”, “bezak” degan ma'noni anglatadi: u amaliy san'at asarlariga chiroy bag'ishlaydi. Yo'lsimon naqsh turli elementlar, yordamchi chiziqlar asosida yo'l ichida joylashishi bilan ajralib turadi. Naqsh chizishda ritm element va ranglarning takrorlanishini bildiradi.



Barglardan yo'lsimon naqsh chizish bosqichlari



Yo'lsimon naqsh tasvirini mashq daftariga ketma-ketlik asosida chizing.



1. Yo'lsimon naqsh tasvirini kuzating va tahlil qiling.
2. Yo'lsimon naqsh qanday chiziladi?
3. Yo'lsimon naqsh qanday elementlardan tuzilgan?



Barglardan yo'lsimon naqsh islang.





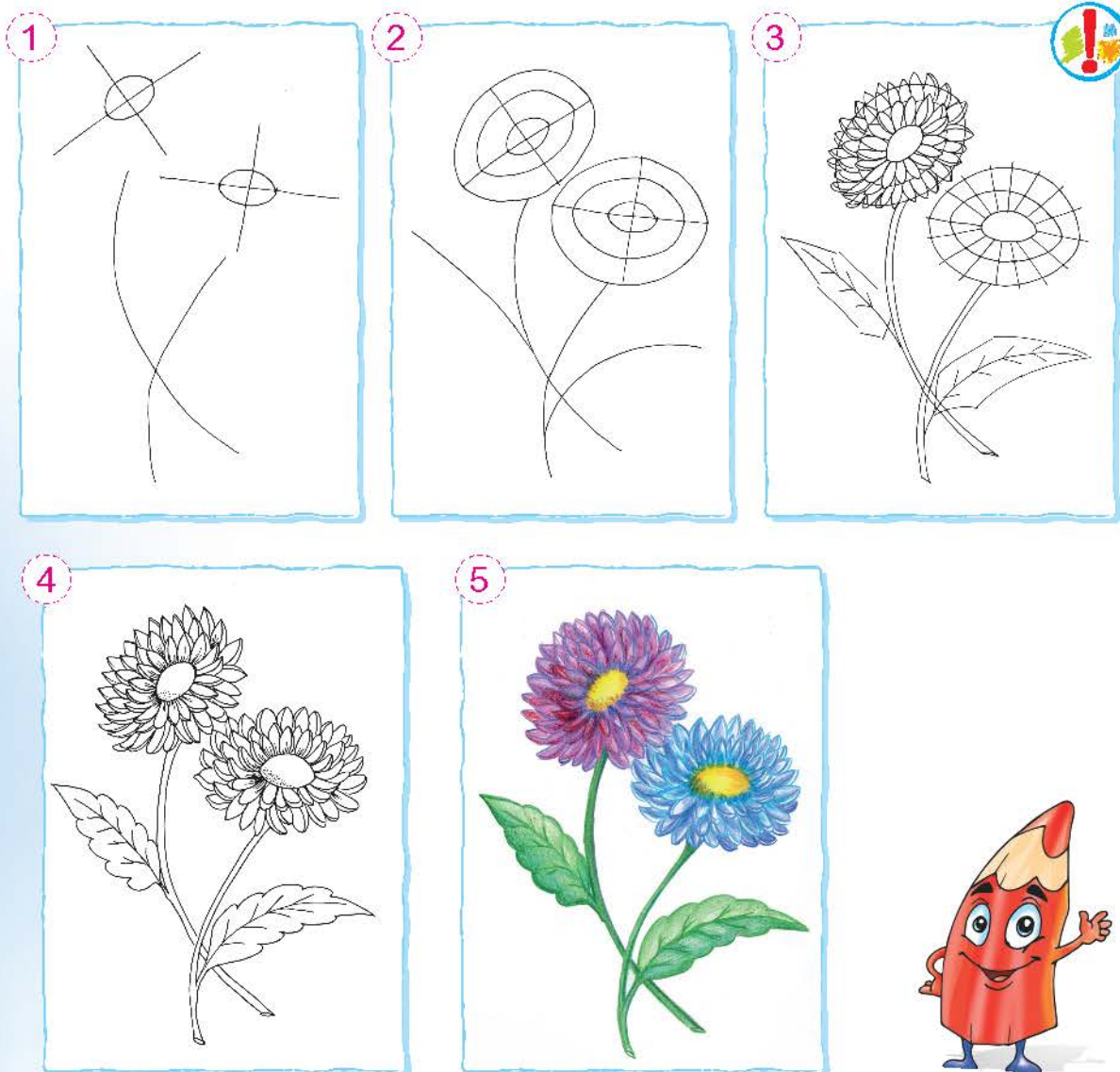
Tabiatda xilma-xil gullar bo'ladi. Kuzgi gullarga astra, xrizantema va boshqalar kiradi.

Bu qiziq

Dunyodagi eng kichik gulning o'lchami 1 millimetr, eng katta gulniki esa 91 santimetrga teng.



Astra gulini chizish bosqichlari



Astra guli tasvirini mashq daftariga chizing.



1. Astraning gulbarglari, yaproqlari, novdasi qanday rangda tasvirlangan?
2. Qanday kuzgi gullarni bilasiz?



“Kuzgi gullar” tasvirini yakunlang.





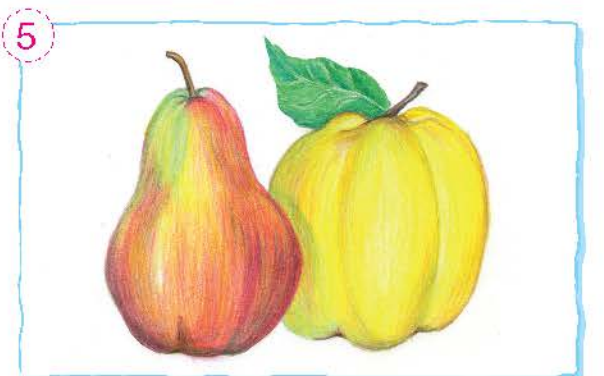
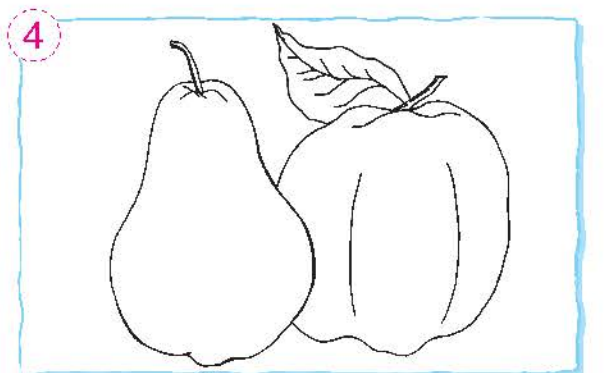
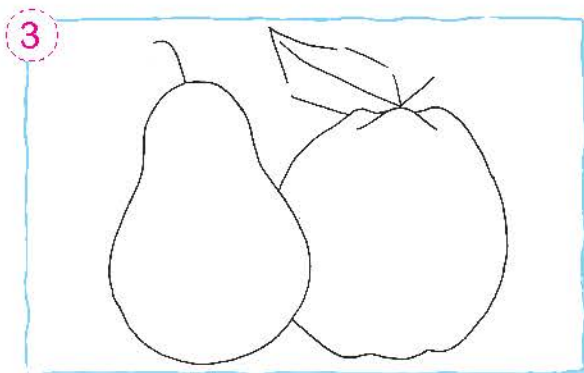
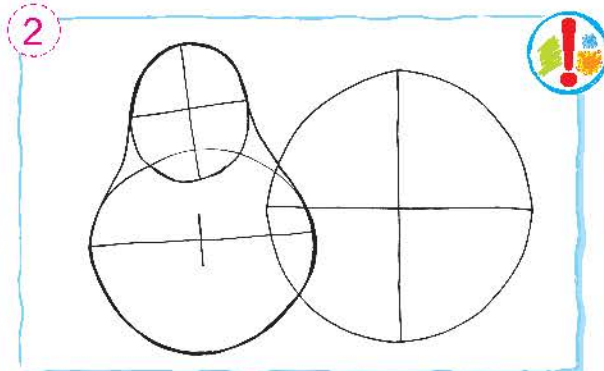
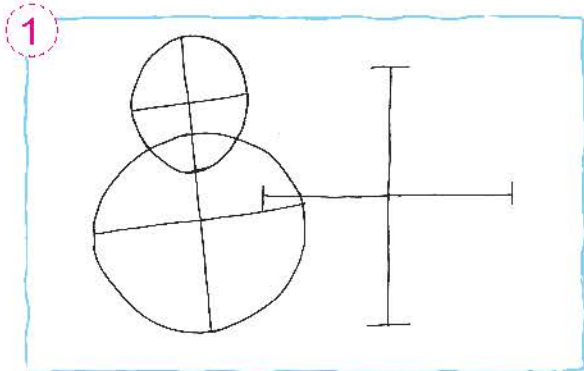
Natyurmort so'zi “jonsiz tabiat” ma'nosini bildiradi. Natyurmortda buyumlar, mevalar, gullar shakllari tasvirlanadi.



Dilorom Mamedova 1974-yil 28-yanvarda Toshkent shahrida tug'ilgan. 1998-yili Toshkent teatr va rassomlik institutini tamomlagan. 1998-yildan O'zbekiston Badiiy akademiyasi a'zosi.

2009–2016-yillari Xitoy, AQSH, Birlashgan Arab Amirliklari, Tailandda xalqaro ko'rgazmalar tashkil etgan. Iste'dodli rassomning asarlari O'zbekiston davlat san'at muzeyida, Moskvaning “Nikor” muzeyida, shuningdek, xorijiy shaxsiy kolleksiyalarda saqlanmoqda.

“Behi va nok” natyurmortini chizish bosqichlari



“Behi va nok” natyurmortini mashq daftariga chizing.



1. Behi bilan nokning shaklidagi farqini ayting.
2. Behi va nok tasviri qanday ranglarda berilgan?
3. Mevalardan tashkil topgan natyurmortni tahlil qiling.



Natyurmortni yakunlang.





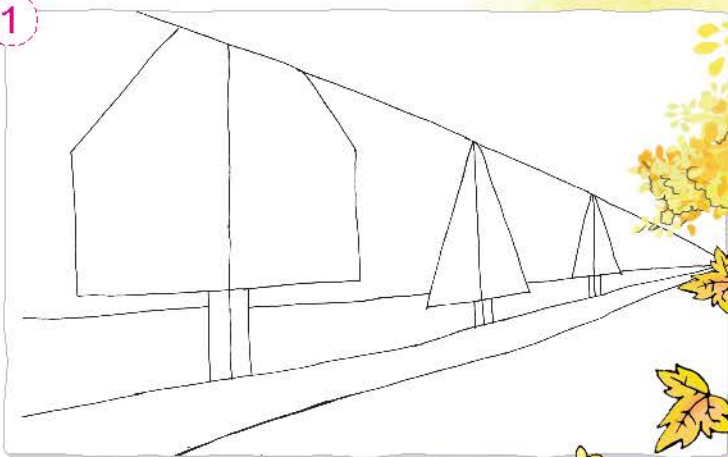
Kuzda daraxtlarning barglari sarg‘ayib, butun atrofni iliq ranglarga burkaydi. Havo harorati pasayib, yorug‘lik kamayganida barglar yashil tusini yo‘qotib, sarg‘ayadi.

Yaqindagi va ketma-ket saf tortib turgan daraxtlar rasmini chizganda perspektiva qoidalariga rioya qilish talab etiladi.

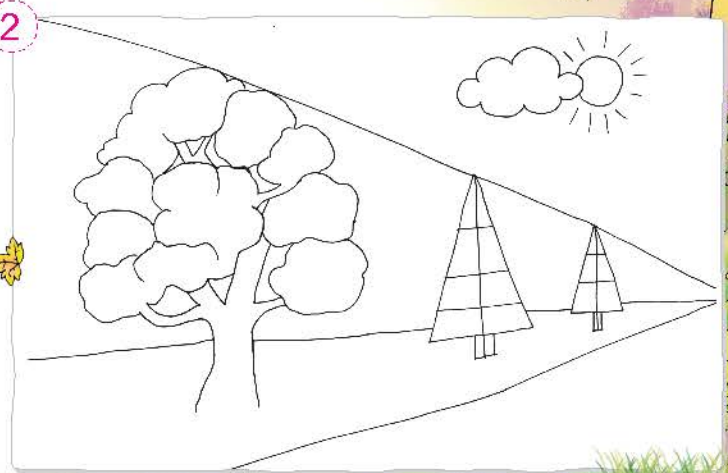
Bunda yaqinda turgan daraxt o‘lchami bir nuqta tomon qisqarib boradi.

**“Daraxtlarning kuzgi ko‘rinishi” rasmini
chizish bosqichlari**

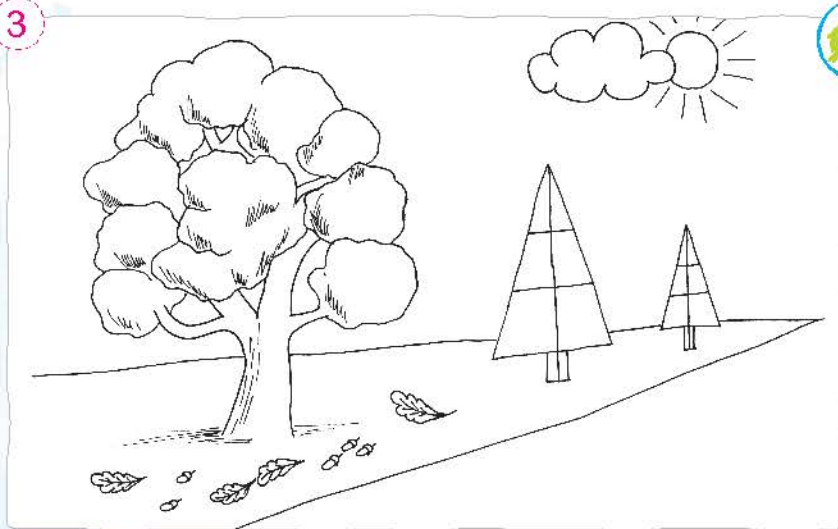
1



2



3



4



Daraxtlarning kuzgi ko'inishini mashq daftariga chizing.



1. Eman va archa daraxtlarining ko'inishi bir-biridan qanday farqlanadi?
2. Daraxtlarning kuzgi va yozgi ko'inishlaridagi farqni ayting.
3. Daraxtlar kuzda qanday ko'inishda bo'ladi?

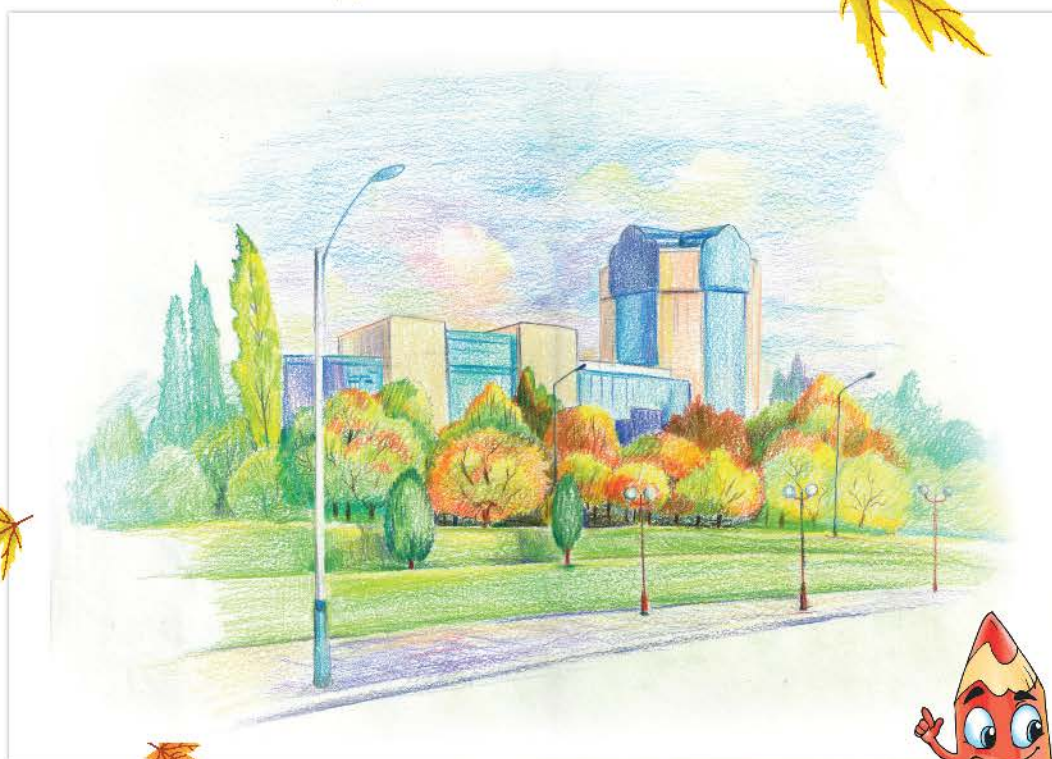
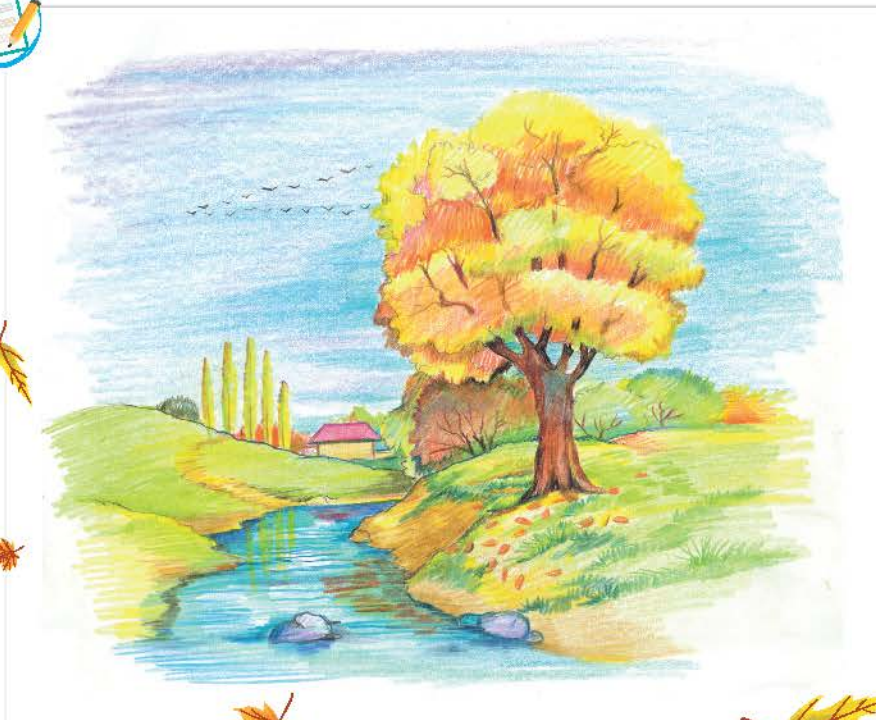


“Daraxtlarning kuzgi ko'inishi” tasvirini yakunlang.



8-mavzu. 1-nazorat ishi

“KUZ MANZARASI”
MAVZUSIDA RASM CHIZISH

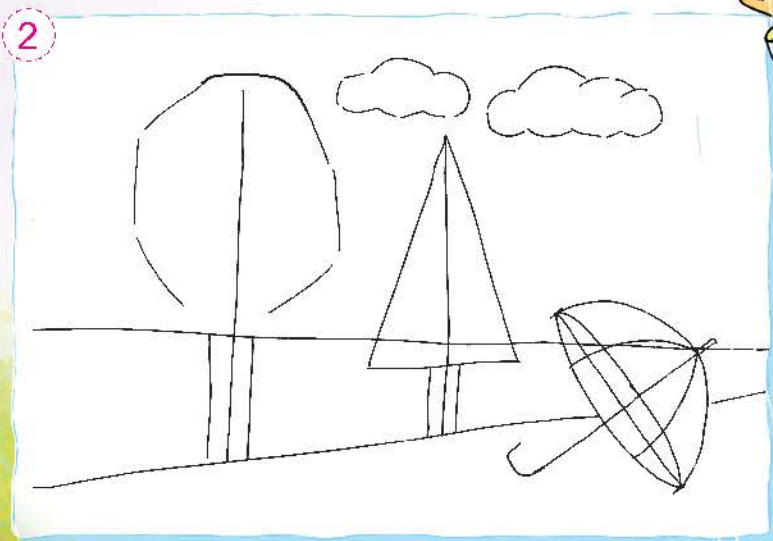
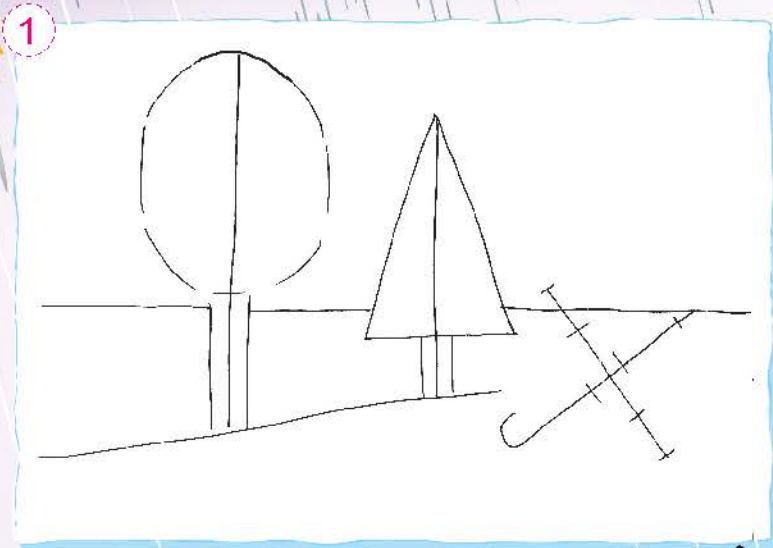




Kuz faslida bulutli, yomg‘irli kunlar ko‘p bo‘ladi. Yomg‘ir yog‘ayotganini kuzatganmisiz? Ko‘lmaklarda daraxtlar, odamlar va boshqa narsalar aksini ko‘rganmisiz?



**“Yomg‘ir yog‘moqda” tasvirini
chizish bosqichlari**



3



4



“Yomg‘ir yog‘moqda” tasvirini mashq daftariga chizing.



Chinor va archa daraxtlarining ko‘rinishi bir-biridan qanday farqlanadi?



“Yomg‘ir yog‘moqda” tasvirini yakunlang.







2-bob

HAYKALTAROSHLIK

Haykaltaroshlik – tasviriy san’at turi. Bunda tasvirlar dumaloq va bo’rtma ko’rinishda ishlanadi.

Dumaloq haykal – hamma tomonidan ko’rish mumkin bo’lgan haykaltaroshlik asari.

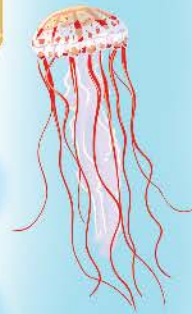
Bo’rtma haykal – tekis yuzada bo’rttirib ishlanadigan tasvir.



Haykaltaroshlik tasviriy san’atning boshqa turlaridan uch o’lchamda bo’lishi bilan farqlanadi.

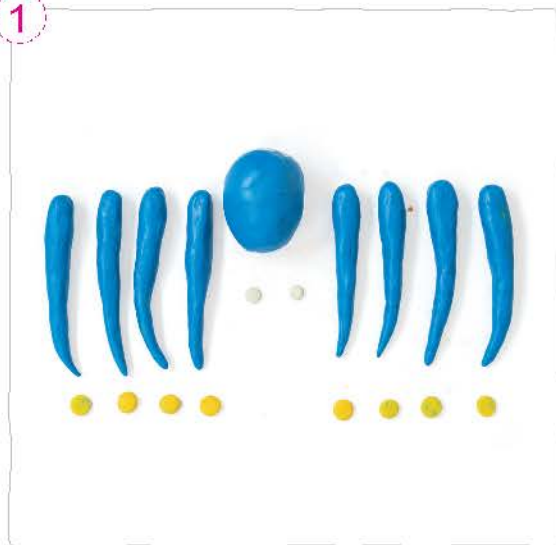


Sakkizoyoq suvosti jonivori bo'lib, uning 3 ta yuragi, 8 ta oyog'i bor. U 100 metr chuqurlikda yashaydi, rangini o'zgartirish xususiyatiga ega. Qo'rqib ketganida oq rangga, jahli chiqqanida qizil rangga kiradi.



“Quvnoq sakkizoyoqchalar” haykalchalarini ishlash bosqichlari

1



2



3



4



1. Sakkizoyoqlar shaklini kuzating va tahlil qiling.
2. Haykaltaroshlikning grafika va rangtasvirdan farqini ayting.



“Quvnoq sakkizoyoqchalar” mavzusida haykalchalar yasang.





Dengiz yulduzi – suvosti jonivori. Uzunligi 12–25 cm, tanasining rangi qizil, sariq, havorang va jigarrang tusda bo‘ladi. Og‘zi qornining markazida joylashgan. Uning beshta kuchli qo‘li bor.



“Dengiz yulduzi” haykalchasini ishlash bosqichlari



1. Dengiz yulduzining rangini ayting.
2. Dengiz yulduzi qanday ranglarda bo'ladi?



“Dengiz yulduzi” haykalchasini yasang.





Qisqichbaqa suvda va quruqlikda yashaydigan jonivor. Uning yetti mingga yaqin turi mavjud. Qisqichbaqa oldinga, orqaga va yon tomonga tez harakat qila oladi. Qisqichbaqalar oziqlanishida qisqichlari muhim ahamiyatga ega.



“Qisqichbaqa” haykalchasini ishlash bosqichlari

1



2



3



4



1. Qisqichbaqa qayerda yashaydi?
2. Qisqichbaqalarning qancha turi mavjud?



“Qisqichbaqa” haykalchasini yasang.





Dengiz otchasi – suvda yashaydigan jonivor. Tanasidagi ignalari himoyalaniishi, ov qilishi uchun xizmat qiladi. Bu jonivor xavf sezganida dengiz o‘tlari orasiga yashirinadi. Dengiz otchasining bo‘yi 30 cm atrofida bo‘ladi.



“Dengiz otchasi” haykalchasini ishlash bosqichlari

1



2



3



4



1. Dengiz otchasi o'zini qanday himoya qiladi?
2. Dengiz otchasining bo'yi necha santimetrga teng?
3. Dengiz otchasi shakli va rangining o'ziga xos tomonlarini kuzating va tahlil qiling.



“Dengiz otchasi” haykalchasini yasang.





Oltin baliq – suvda yashaydigan jonivorlardan biri. Uning ko'zi to'q sariq, tanasi esa kumush, sariq, qizil va qora ranglarda bo'ladi.



“Oltin baliqcha” bo‘rtma haykalchasini ishlash bosqichlari

1



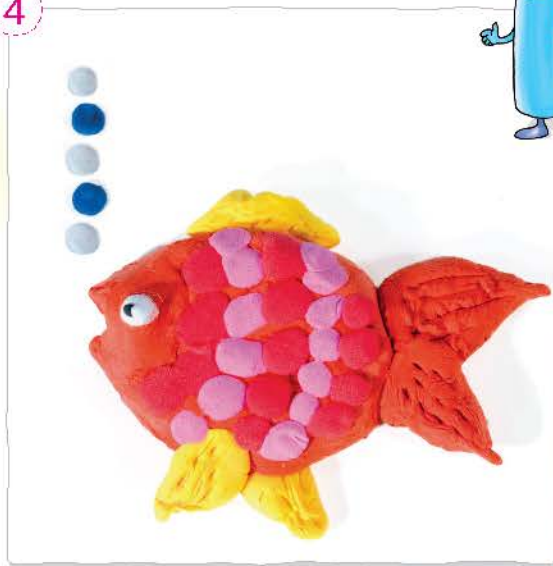
2



3



4



1. Oltin baliqning ko‘zi qanday rangda bo‘ladi?
2. Oltin baliqning tanasida qanday ranglar uchraydi?



“Oltin baliqcha” haykalchasini yasang.



15-mavzu. 2-nazorat ishi

**“SUVOSTI SALTANATI” MAVZUSIDA
BO‘RTMA USULDA TASVIR ISHLASH**



Berilgan namuna asosida loy va plastilindan haykalchalar ishleng.



Delfinlar okeanlarda guruh bo'lib yashaydi. Delfin tanasi silliq, egiluvchan, rangi har xil bo'lgan sutemizuvchi jonivordir. U baliqlar bilan oziqlanadi. Delfinning 40 ga yaqin turi bor. Delfinlar juda aqlli, ularni biror-bir harakatga o'rgatish ham mumkin.



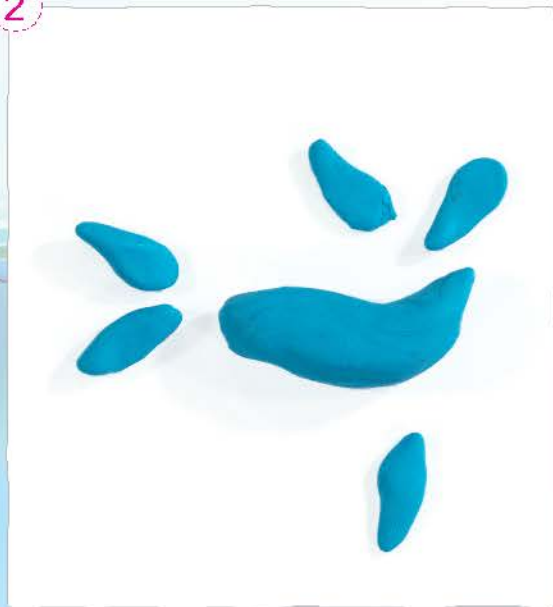


“Delfin” haykalchasini yasash bosqichlari

1



2



3



4



1. Delfinlarning nechta turi bor?
2. Delfin qayerda yashaydi?



“Delfin” haykalchasini yasang.







3-bob RANGTASVIR

Rangtasvir moyli, akvarel, guash kabi turli bo'yoqlar bilan qog'oz, mato, karton, devor, oyna kabi tekis yuzalarga ishlanadi.

Rangtasvir asarlarida rang asosiy o'rinni egallaydi.

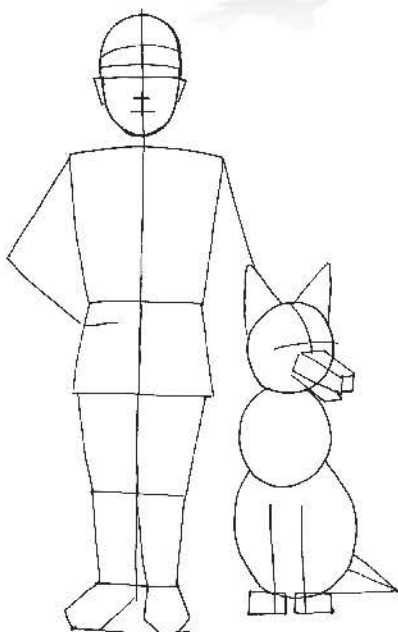
Rangtasvirning dastgohli, mahobatli, miniatyura turlari mavjud.



Askarlarning libosi qanday bo'lishiga e'tibor berganmisiz? To'g'ri topdingiz, ba'zan daraxt, gohida esa qumli cho'l rangiga mos bo'ladi. Chunki ranglar ham himoyalanihga ko'maklashadi.

Askar va uning iti tasvirini chizish bosqichlari

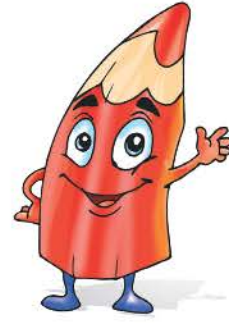
1



2



3



4



Askar va uning iti tasvirini mashq daftariga chizing.



1. Askar va uning iti tasvirining birinchi bosqichida qanday geometrik shakllarni ko'ryapsiz?
2. Askarlarning kiyimlari har xil tusda bo'lishining sababi nima?



Askar va uning iti tasvirini yakunlang.





Ranglar iliq va sovuq, axromatik va xromatik kabi turlarga bo'linadi.

Xromatik ranglar sirtida rang tusiga ega bo'lgan barcha ranglardir.



Axromatik ranglar sirtida rang tusiga ega bo'lmagan oq, kulrang, qora kabi ranglardir.



Iliq ranglar quyosh va olov tusini bildiradigan qizil, sariq, zarg'aldoq kabi ranglardan tashkil topadi.

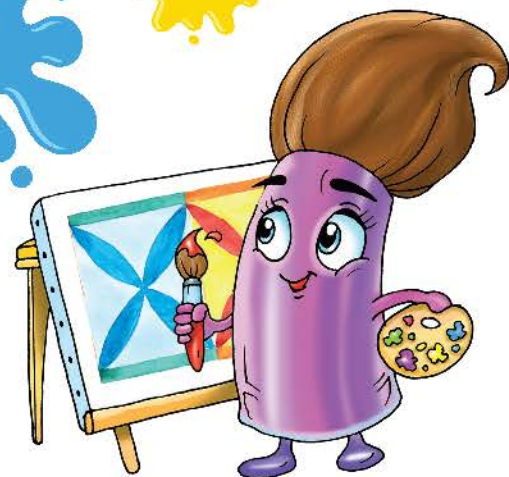
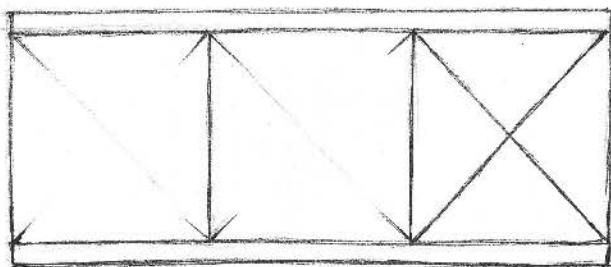


Sovuq ranglar suv, muz, soya tusini bildiradigan zangori, ko'k, binafsha kabi ranglardir.

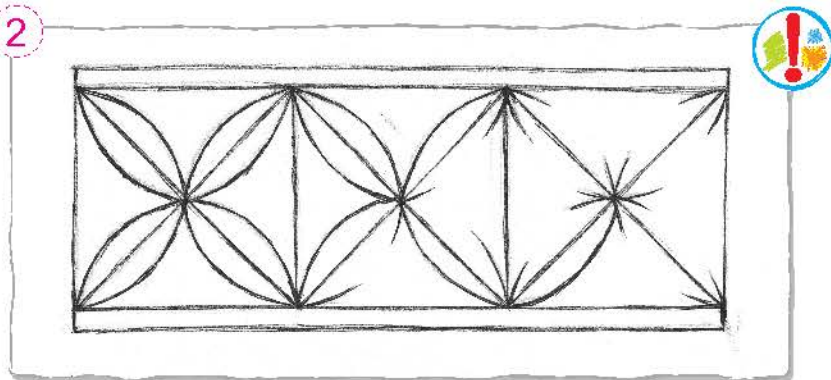


Naqsh chizish bosqichlari

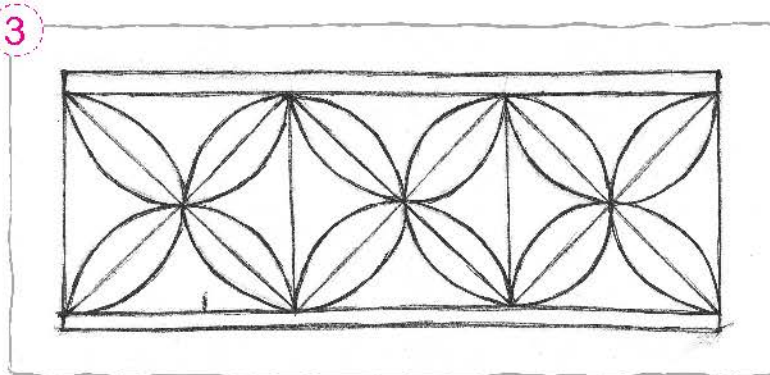
1



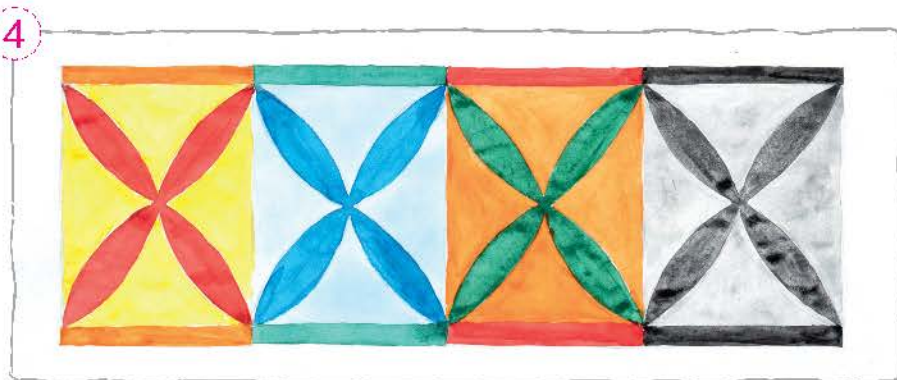
2



3



4



Naqshni mashq daftariga ketma-ketlik asosida chizib, iliq va sovuq, axromatik va xromatik ranglar bilan bo'yang.



1. Xromatik ranglar qanday ranglar?
2. Iliq ranglarning nomini ayting.



Yo'lsimon naqshni yakunlang.



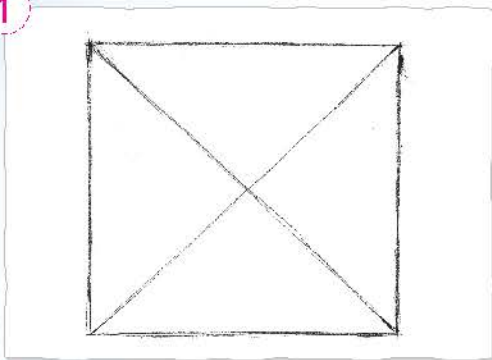


Amerikalik fotograf Uinston Bentli 1885-yili qor parchasini ilk bor suratga oldi. U 2400 ga yaqin qor parchasini solishtirib, ular bir-biriga o'xshamasligini aniqladi.

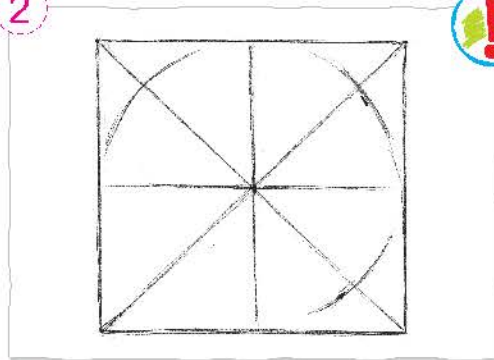


Qor parchasini chizish bosqichlari

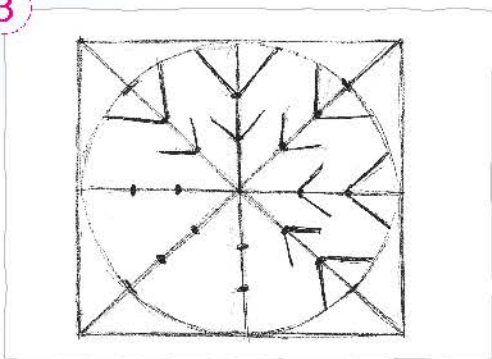
1



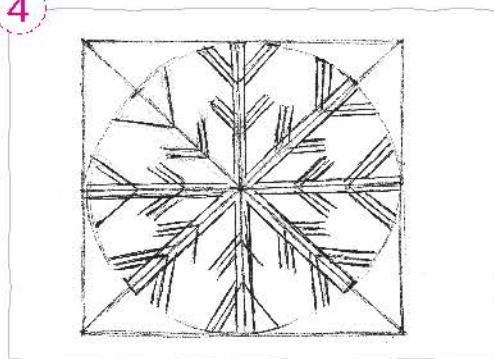
2



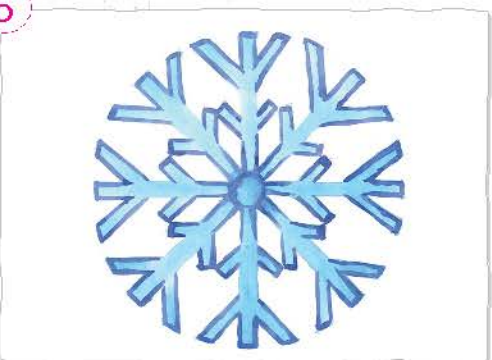
3



4



5



“Qor parchalari” tasvirini mashq daftaringa ketma-ketlik asosida chizing.



1. Qor parchalari bir-biriga o'xshaydimi?
2. Qor parchasi tasviri qanday geometrik shakllardan hosil bo'ladi?



Qor parchasi tasvirini yakunlang.





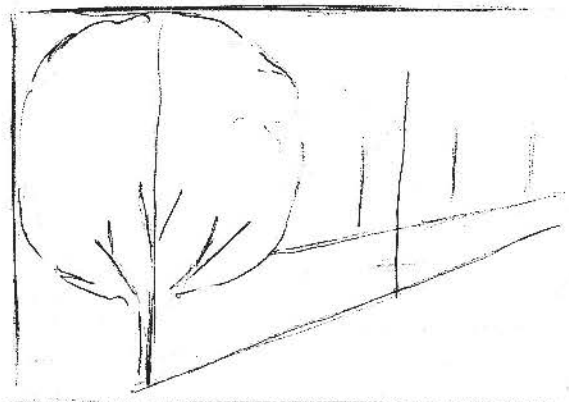
Qishda atrof, borliq oppoq qor bilan qoplanadi. Havo musaffo bo'ladi, chang va g'uborlardan tozalanadi.

Manzara chizganda perspektiva qoidalariga rioya qilish talab etiladi.

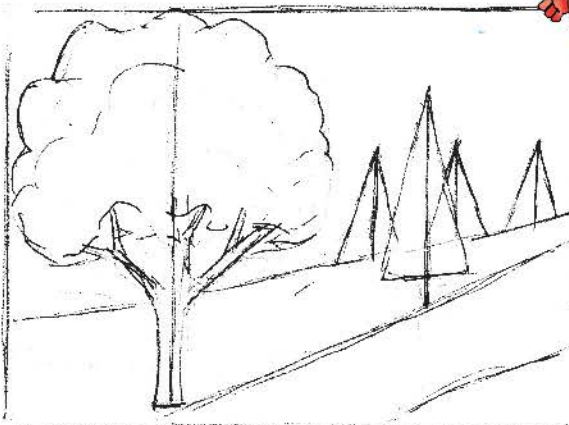
Masalan, perspektiva qoidalariga ko'ra, bizga yaqin turgan narsalar uzoqlashgani sari hajmi kichrayib, rang yorqinligi o'zgaradi.

Qish manzarasini chizish bosqichlari

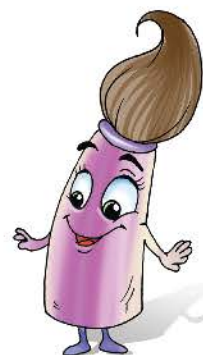
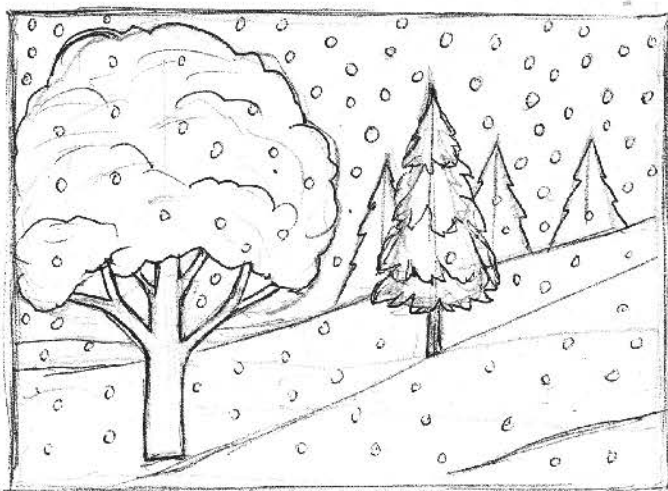
1



2



3



4



“Qish manzarasi” mavzusidagi rasmni mashq daftariga chizing.



1. Qish manzarasiga oid rasmlarni kuzating, tahlil qiling.
2. Bizga yaqin turgan narsalar uzoqlashgani sari qanday o'zgarish sodir bo'ladi?



“Qish manzarasi” tasvirini yakunlang.



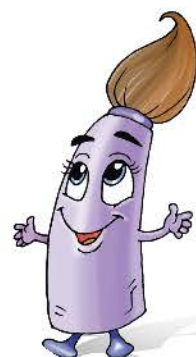
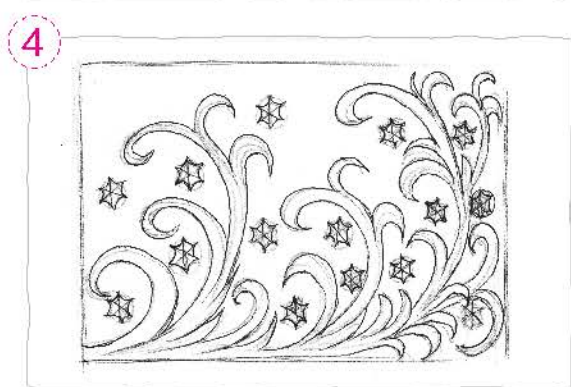
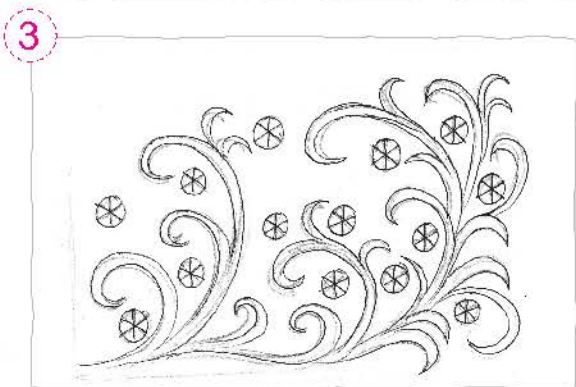
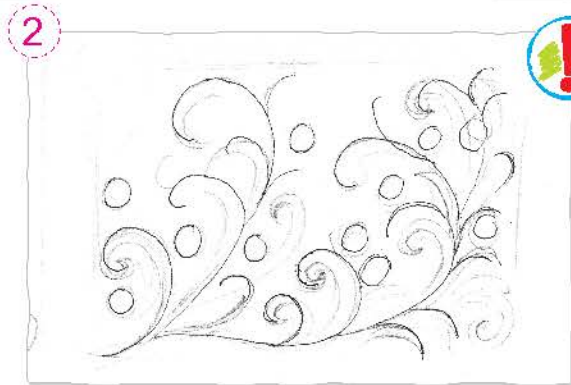
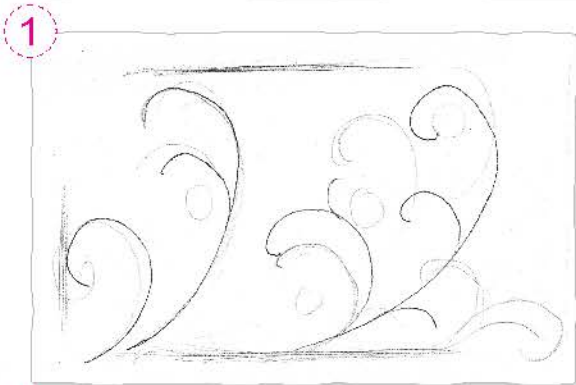


Ushbu darsda qattiq sovuq tufayli deraza oynalarida hosil bo'ladigan go'zal, mo'jizaviy bezaklar tasvirini ishlashni o'rganamiz. Ularni tasvirlashda sovuq ranglardan foydalanamiz. Bu bezaklar naqsh elementlariga ham o'xshab ketadi. Qishning mo'jizaviy bezaklari tasvirlangan rasmlarni kuzating, tahlil qiling.

“Qishki naqshlar” tasvirini ishlashda sovuq ranglardan foydalaning.



“Qishki naqshlar” rasmini chizish bosqichlari



“Qishki naqshlar” rasmini mashq daftariga islang.



1. “Qishki naqshlar” tasviri elementlari qanday yo‘nalishda joylashyapti?
2. Elementlar ritm hosil qilyaptimi?



“Qishki naqshlar” rasmini yakunlang.





Oygul – ko'p yaproqli moychechak shaklidagi naqsh.

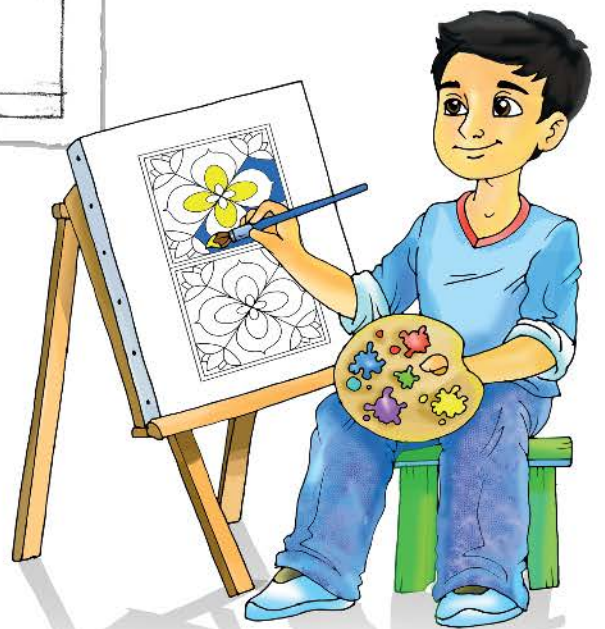
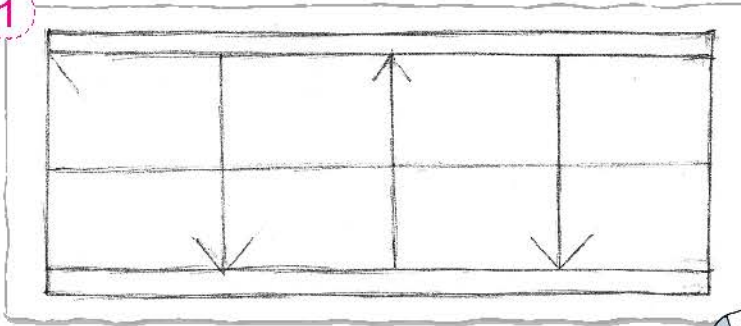
Naqsh chizishda yordamchi chiziqlar va ritmga e'tibor berish muhim ahamiyatga ega.

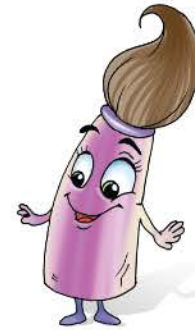
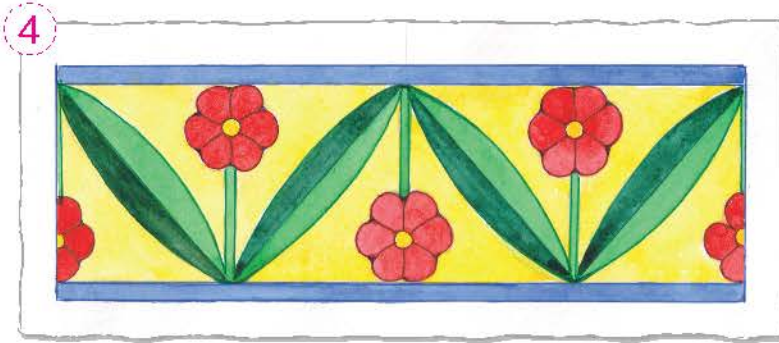
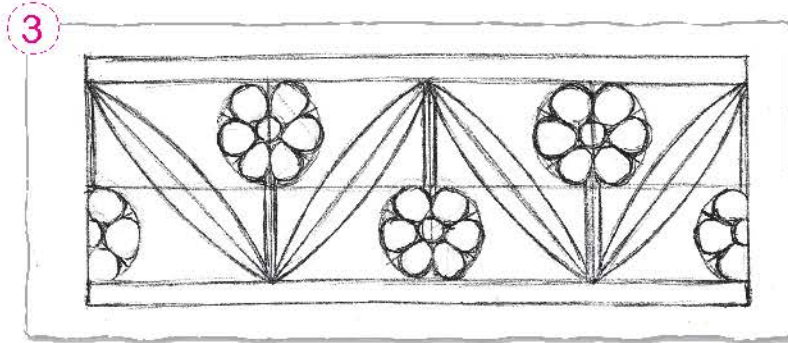
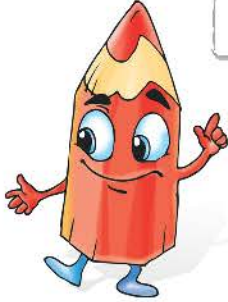
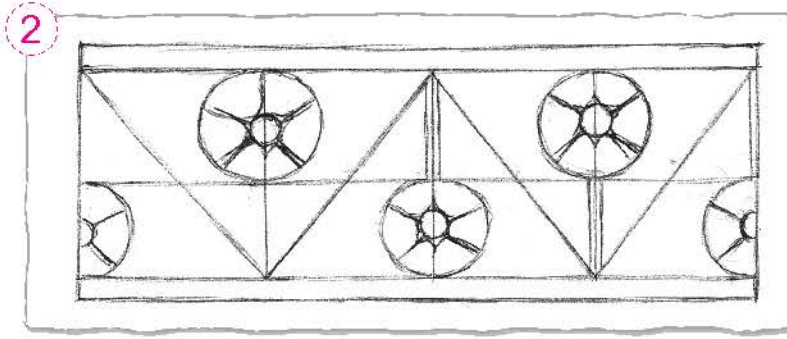
Yordamchi chiziqlar naqsh chizishda elementlarni to'g'ri joylashtirishga yordam beradi.

Ritm naqshda element va ranglarning yordamchi chiziqlar asosida takrorlanishidir.

Oygul va barglardan tuzilgan
yo'lsimon naqsh chizish bosqichlari

1





Yo'lsimon naqshni mashq daftaringa chizing.



1. Naqsh chizishda nimalarga e'tibor berish kerak?
2. Yordamchi chiziqlarning ahamiyati nimada?
3. Elementlar ritm hosil qilyaptimi?



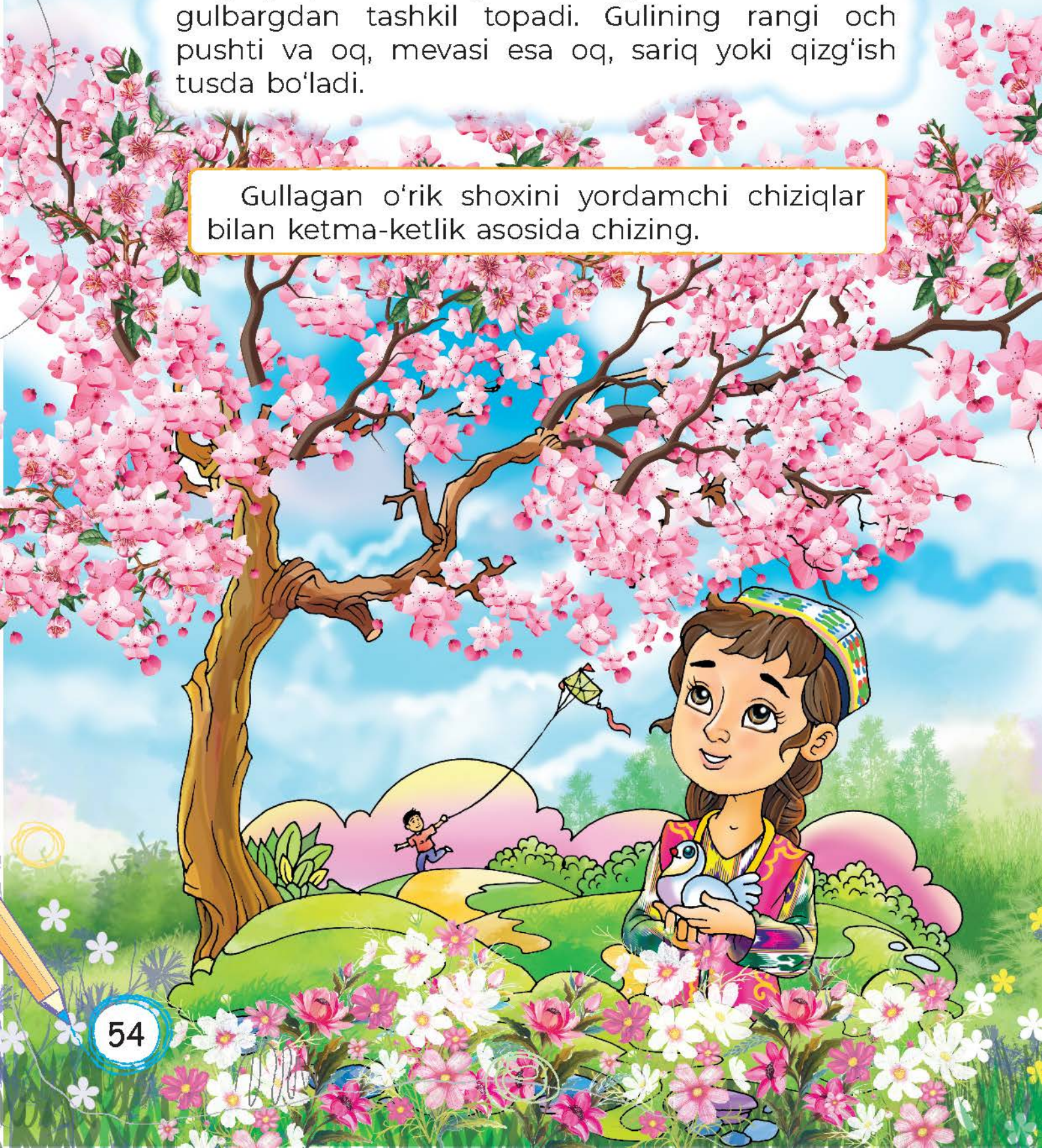
Yo'lsimon naqshni yakunlang.





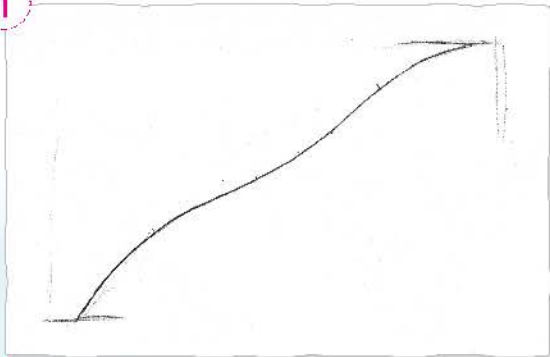
O‘rik daraxtining vatani O‘rta Osiyo bo‘lib, uning 10 ga yaqin turi mavjud. O‘rik guli odatda beshta gulbargdan tashkil topadi. Gulining rangi och pushti va oq, mevasi esa oq, sariq yoki qizg‘ish tusda bo‘ladi.

Gullagan o‘rik shoxini yordamchi chiziqlar bilan ketma-ketlik asosida chizing.

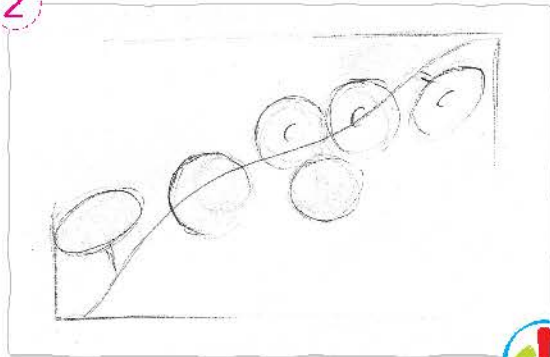


Gullagan o'rik shoxi tasvirini chizish bosqichlari

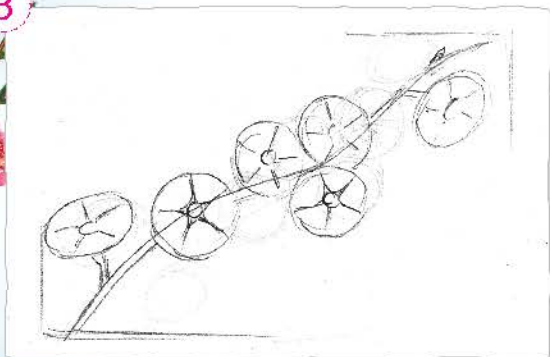
1



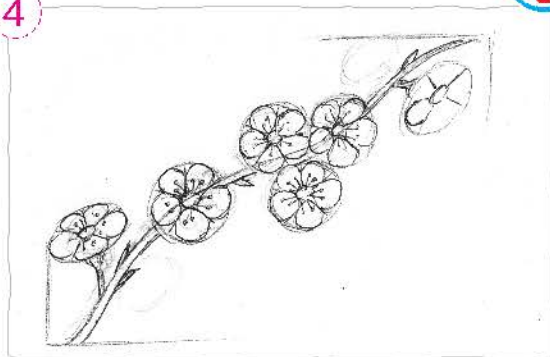
2



3



4



5



Gullagan o'rik shoxi tasvirini mashq daftariga chizing.



1. O'rik gulining gulbarglari qanday rangda?
2. O'rik daraxtining nechta turi mavjud?



Gullagan o'rik shoxi tasvirini rangtasvirda yakunlang.

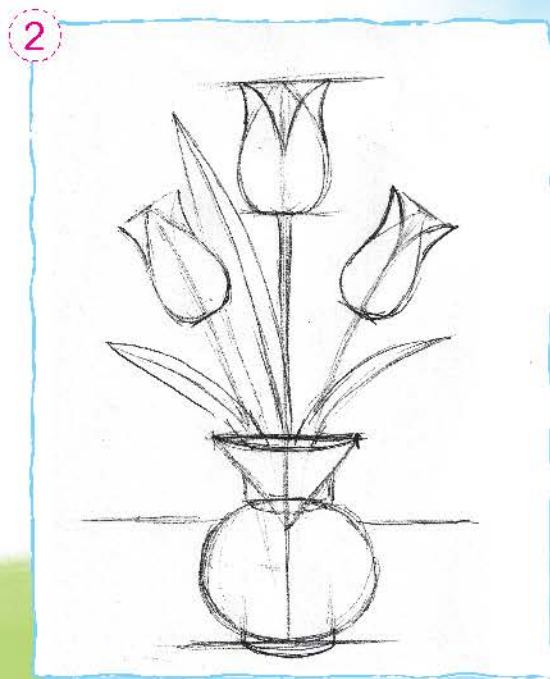
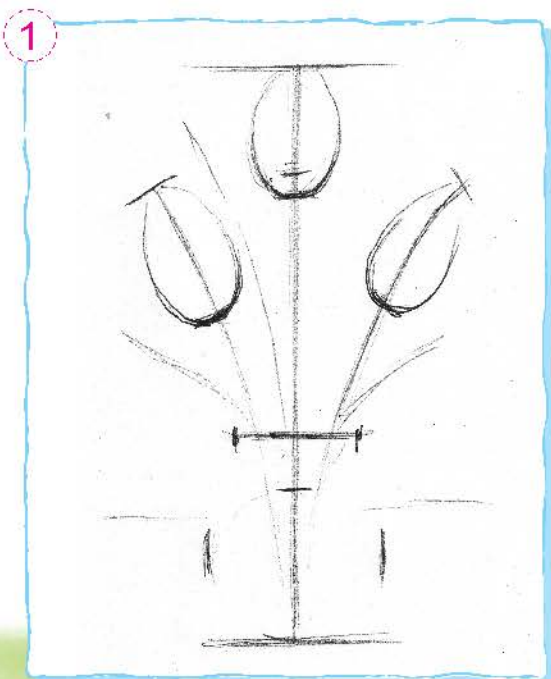


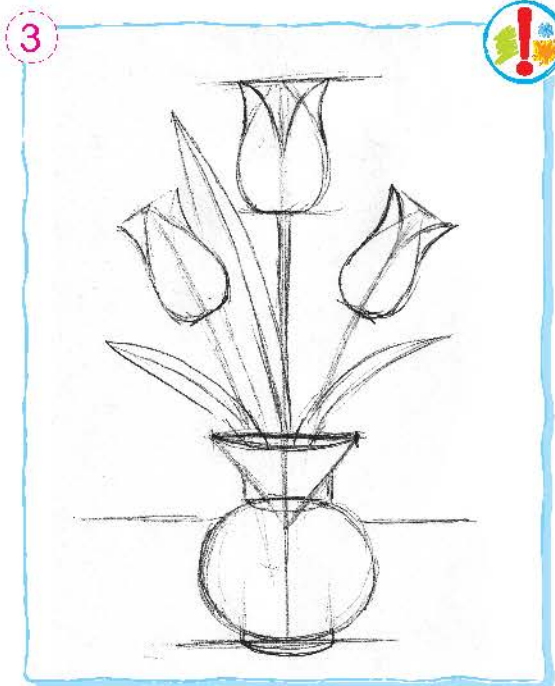


Bahorgi gullardan biri loladir. U loladoshlar oilasiga mansub ko'p yillik o'simlik. Lolaning dunyoda 1400 ga, O'zbekistonda esa 60 ga yaqin turi bor. Qizil, oq, sariq, targ'il, binafsha rangidagi turlari uchraydi. Lolaning bo'yi 20 santimetrdan 50 santimetrgacha bo'ladi.



Lola tasvirini chizish bosqichlari





“Lolalar” natyurmortini mashq daftariga chizing.



1. Lolaning dunyoda nechta turi bor?
2. Natyurmortning birinchi bosqichida qanday ish bajaramiz?
3. Lolaning qanday rangdagi turlari mavjud?



Natyurmortni yakunlang.



25-mavzu. 3-nazorat ishi

**“GO‘ZAL BAHOR TABIATI”
MAVZUSIDA RASM ISHLASH**



Mashq daftariga “Go‘zal bahor tabiati” mavzusida rasm chizing.

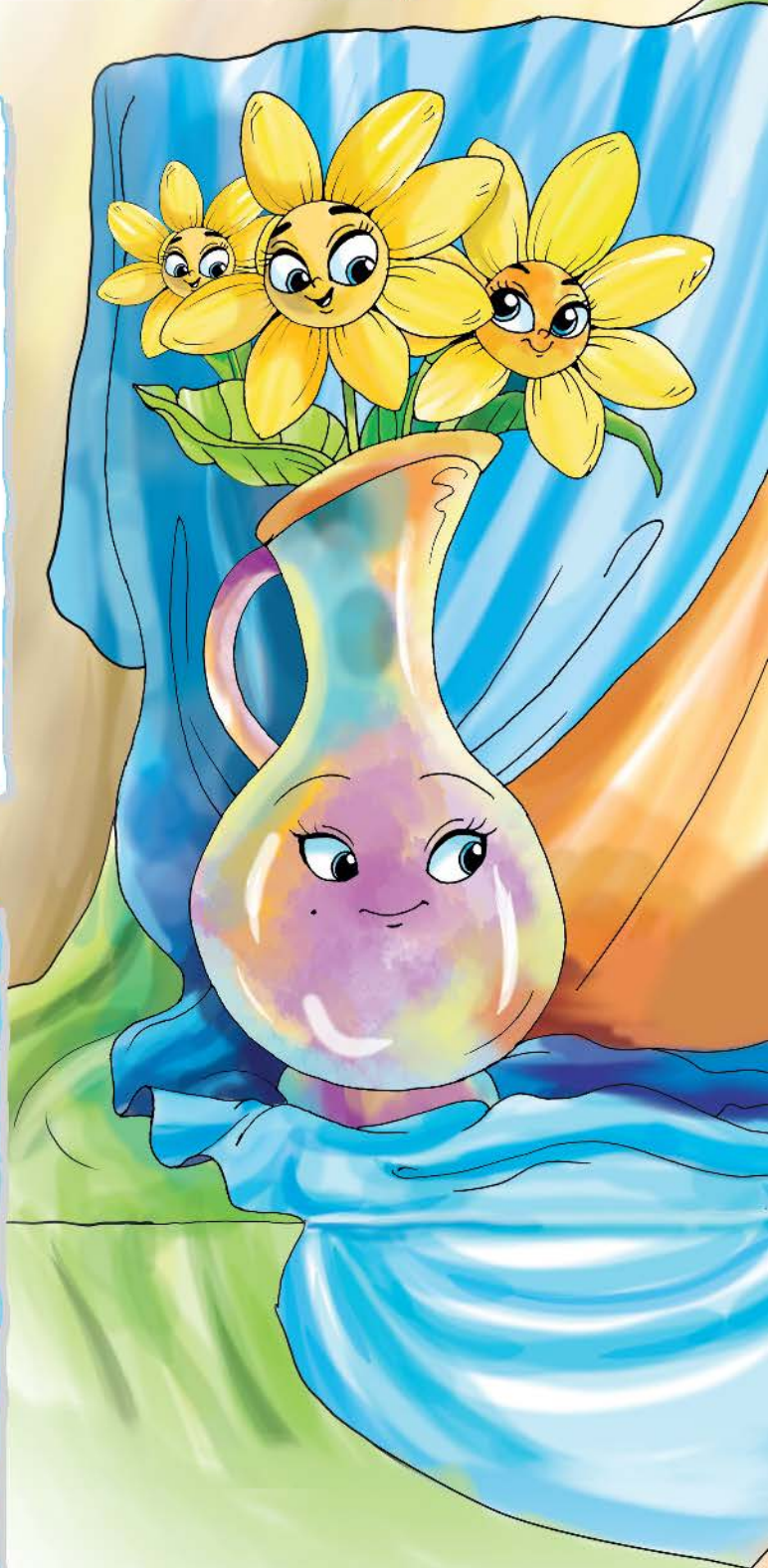
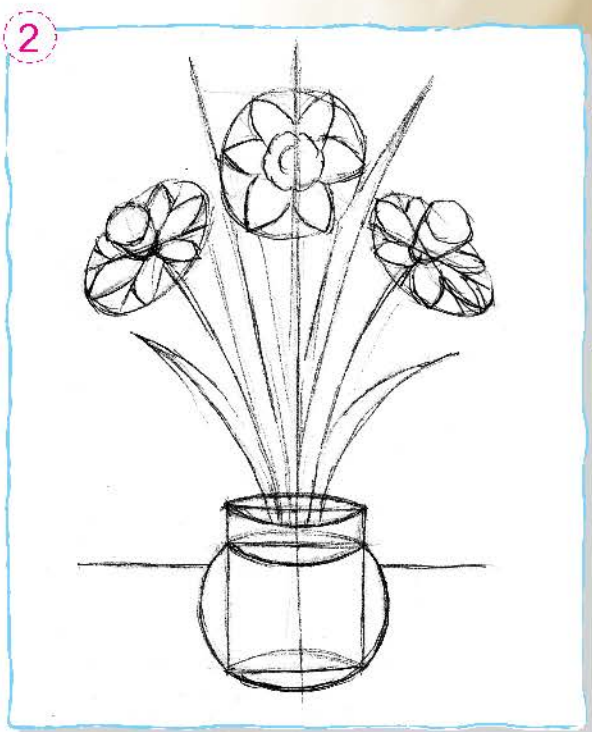
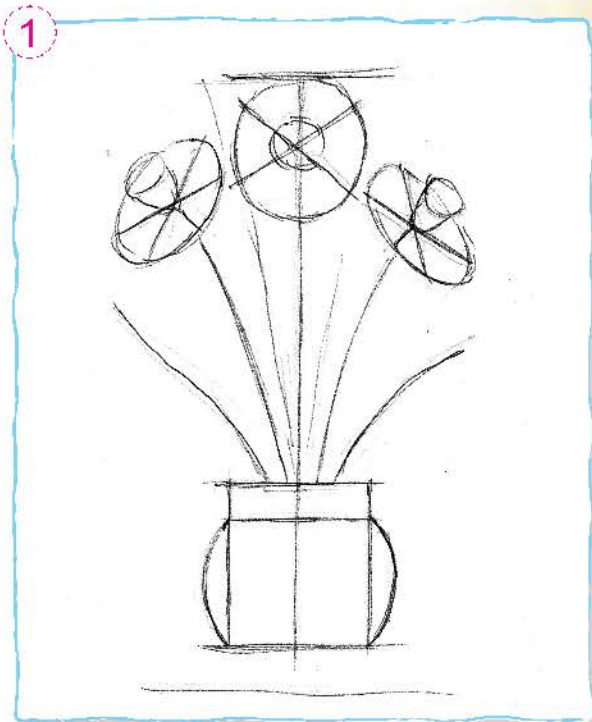


Nargis – chuchmomadoshlar oilasiga mansub. Uning guli odatda sariq yoki oq rangda bo'ladi. 30 ga yaqin turi bor. O'zbekistonda 2 ta turi uchraydi.

Birinchi chorakda siz naturaga qarab ishlash qoidalarini bilib olgan edingiz, endi o'rganganlaringizni rivojlantirib, nargis guli natyurmortini chizamiz.



Naturmortni chizish bosqichlari



3



4



Natyurmortni mashq daftariga chizing.



1. Nargis gulining rangi qanday bo'ladi?
2. Natyurmortning ikkinchi bosqichida nima ish qilamiz?



Natyurmortni yakunlang.







4-bob

KOMPOZITSIYA

Kompozitsiya – badiiy asarning qurilishi g‘oyasi, xarakterini bildiradi.

Kompozitsiya tasvirlangan shakllarni o‘zaro muvofiqlashtirish, umumiylikka olib kelish, ularga badiiy mazmun singdirishdir.





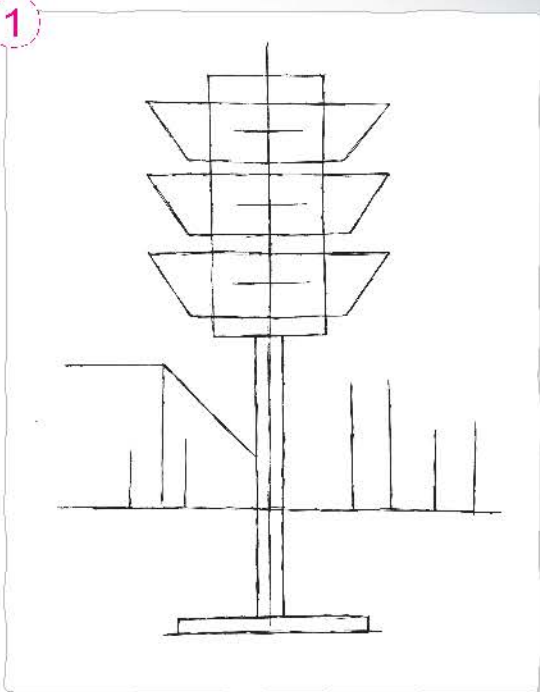
Kompozitsiya darslarida berilgan mavzu ustida ijodiy fikrlashni, bir mavzu bo'yicha bir necha variantlar chizishni o'rganamiz.

Svetofor – yo'lchiroq uchta rangli chiroqdan iborat. Yo'llarda harakatni tartibga soluvchi elektron qurilmadir. “Svetofor” mavzusida ishlangan kompozitsiyadagi obraz yoki narsalar joyini almashtirib, yangi variant tuzib ko'ring.

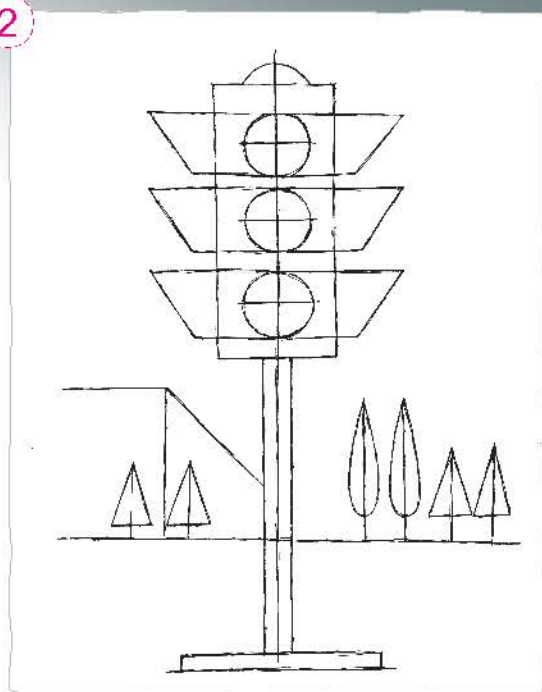


**“Svetofor” mavzusida kompozitsiya
ishlash bosqichlari**

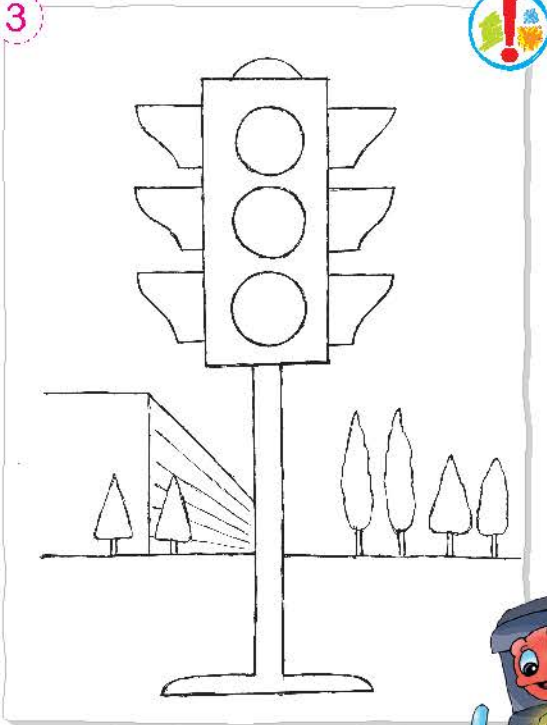
1



2



3



4



"Svetofor" mavzusidagi kompozitsiya tasvirini mashq daftariga chizing.



1. Svetofor nechta rangli chiroqdan iborat?
2. Svetofor qanday elektron qurilma?



"Svetofor" kompozitsiyasini yakunlang.



28-mavzu

“VELOSIPEDCHI” MAVZUSIDA KOMPOZITSIYA ISHLASH

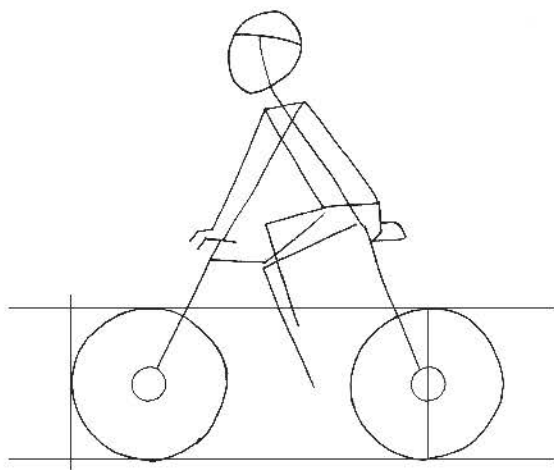


Velosiped oyoq kuchi bilan harakatlanuvchi g'ildirakli transport vositasi. Avvalgi darslarda olgan bilimlarimizni rivojlantirib, “Velosipedchi” mavzusida kompozitsiya chizamiz.

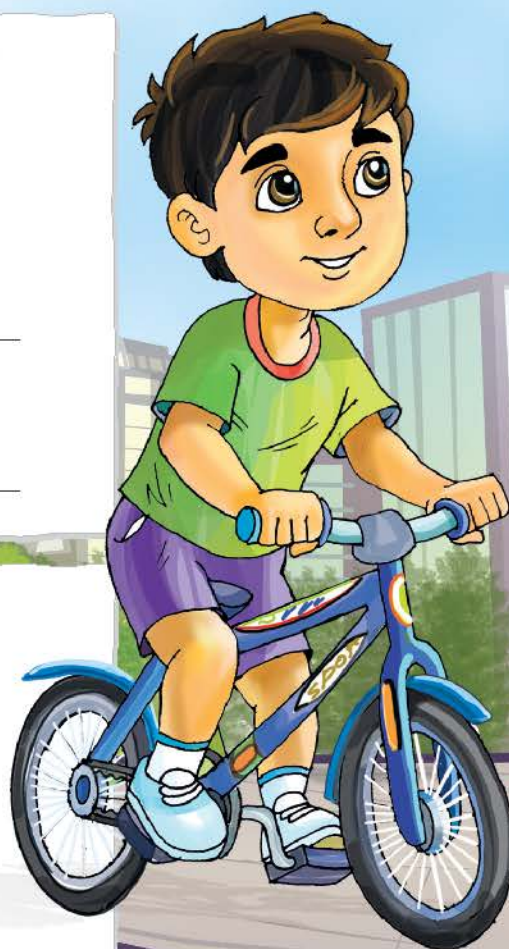
“Velosipedchi” mavzusidagi kompozitsiyani ketma-ketlik asosida chizing.

“Velosipedchi” mavzusida kompozitsiya chizish bosqichlari

1



2



3



4



“Velosipedchi” mavzusidagi kompozitsiyani mashq daftariga chizing.



1. Velosiped qanday transport vositasi?
2. Kompozitsiyaning uchinchi bosqichida qanday ish bajariladi?



“Velosipedchi” kompozitsiyasini yakunlang.



29-mavzu

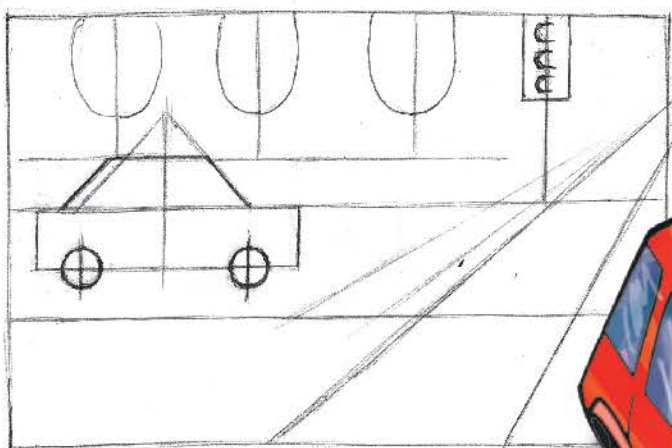
“CHORRAHADAGI AVTOMOBIL” MAVZUSIDA KOMPOZITSIYA ISHLASH



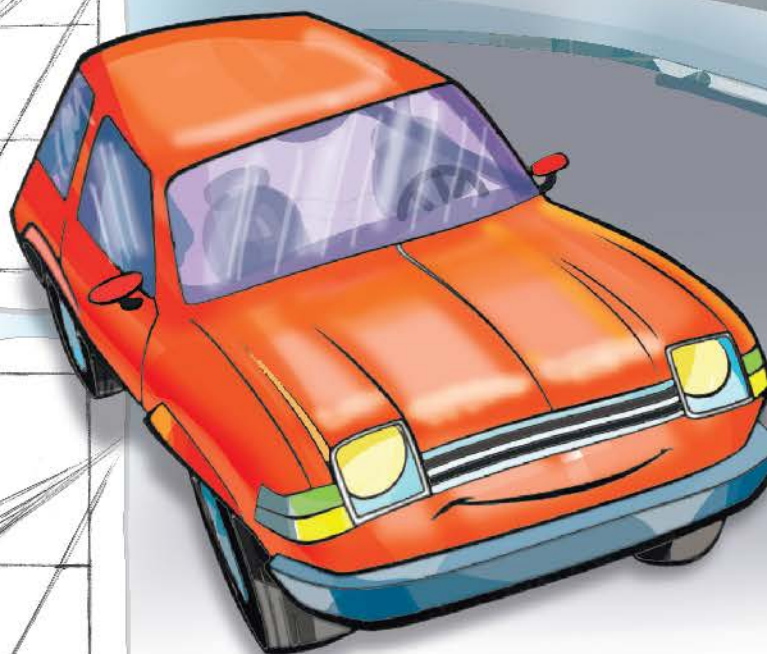
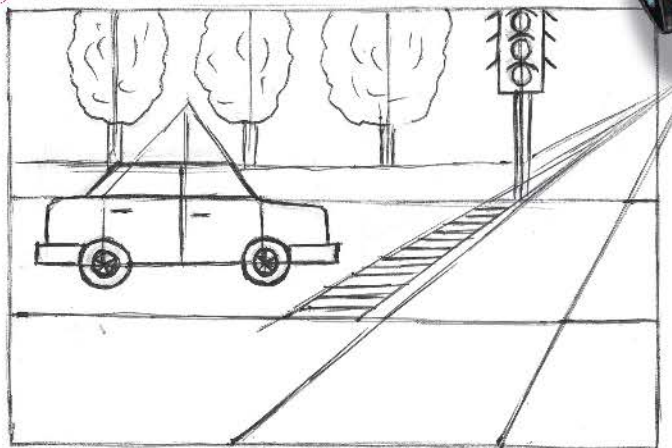
Avtomobil – dvigatel yordamida harakatga keltiriladigan transport vositasi. U insonlarning uzog'ini yaqin qiladi.

“Chorrahadagi avtomobil” mavzusida kompozitsiya chizish bosqichlari

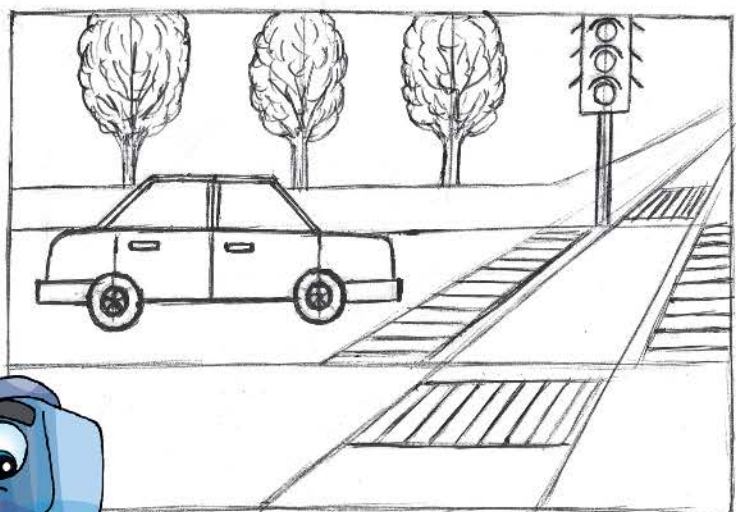
1



2



3



4



“Chorrahadagi avtomobil” kompozitsiyasini mashq daftariga chizing.



1. Avtomobil qanday transport vositasi?
2. Kompozitsiyaning to'rtinchi bosqichida qanday ishlar bajariladi?



“Chorrahadagi avtomobil” kompozitsiyasini yakunlang.



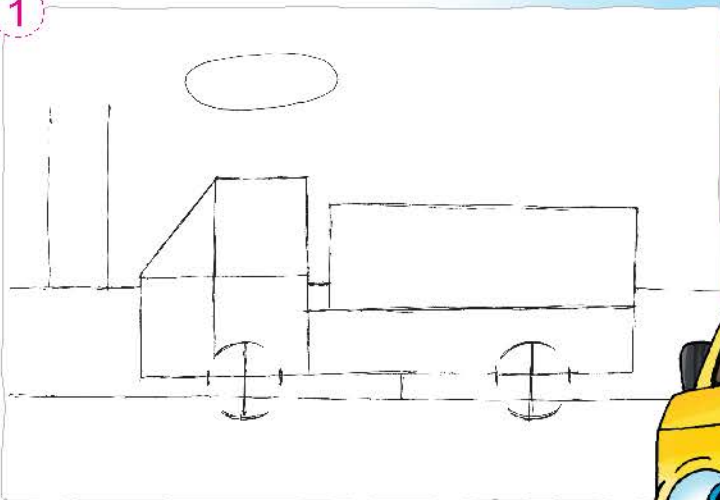


Yuk mashinasi qurilish ishlarida keraksiz yuklarni chiqarib tashlash va qurilish materiallarini tashib keltirishda qo'l keladigan transport vositasidir.

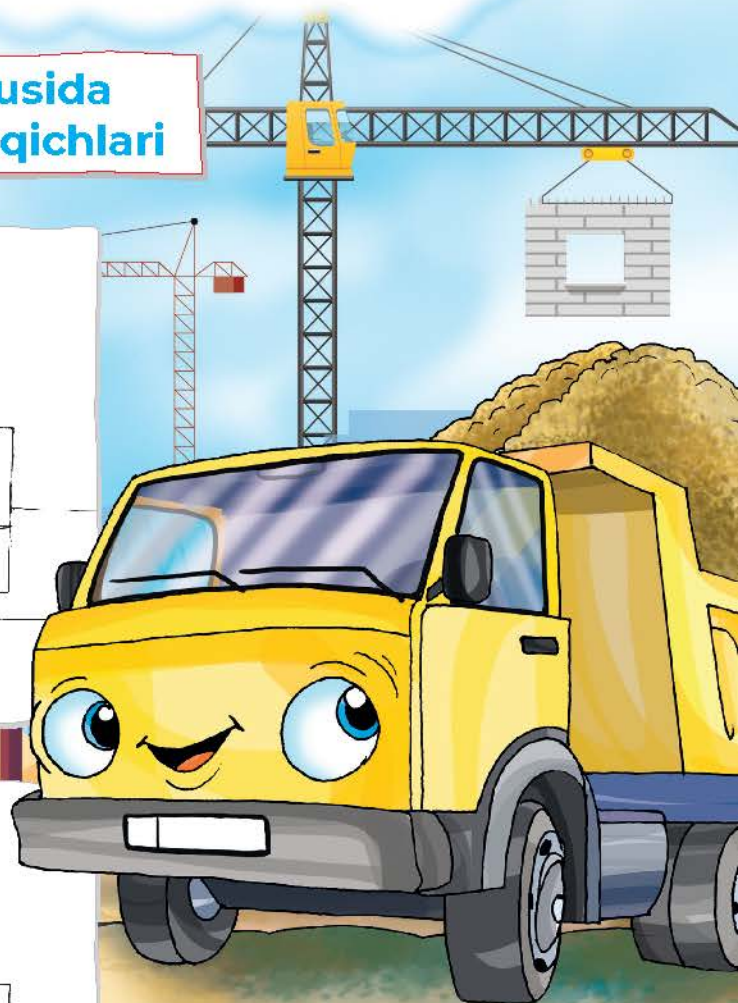
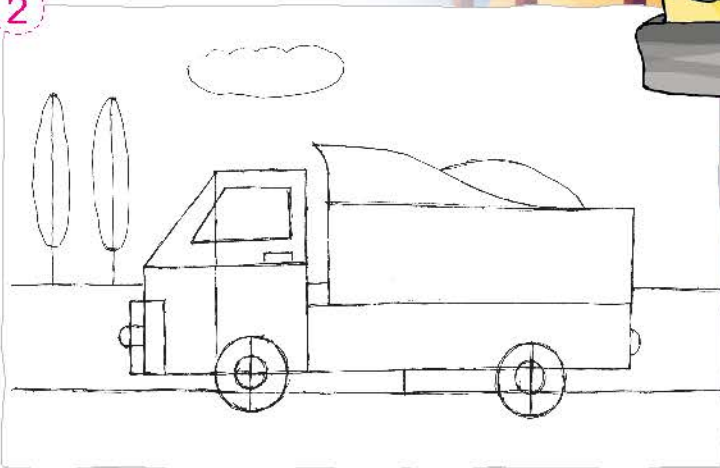
“Yuk mashinasi” mavzusida kompozitsiya chizishda yuk mashinasi va uning yon-atrofidagi qo'shimcha elementlarni tasvirlash kerak bo'ladi.

**“Yuk mashinasi” mavzusida
kompozitsiya chizish bosqichlari**

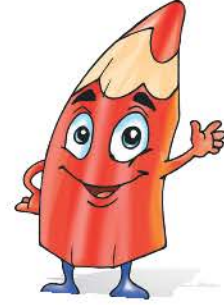
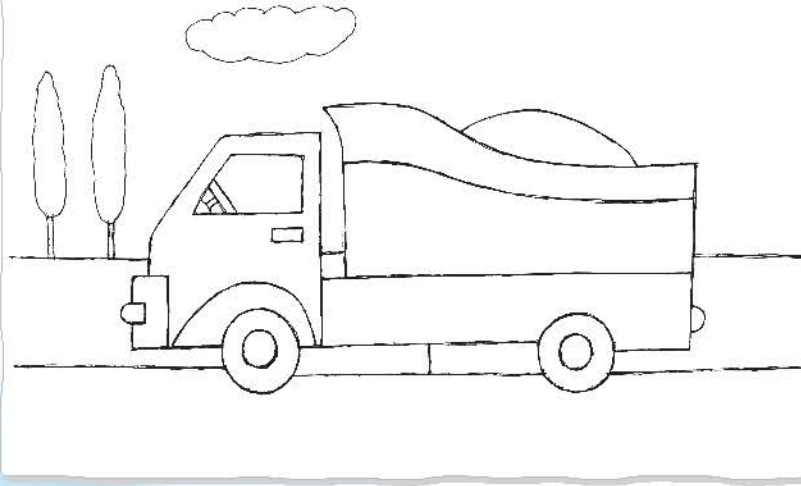
1



2



3



4



“Yuk mashinasi” mavzusidagi kompozitsiyani mashq daftariga chizing.



1. Yuk mashinasi chizishning birinchi bosqichida qanday geometrik shakllarni ko'ryapsiz?
2. Yuk mashinasi qanday transport vositasi?



“Yuk mashinasi” kompozitsiyasini yakunlang.



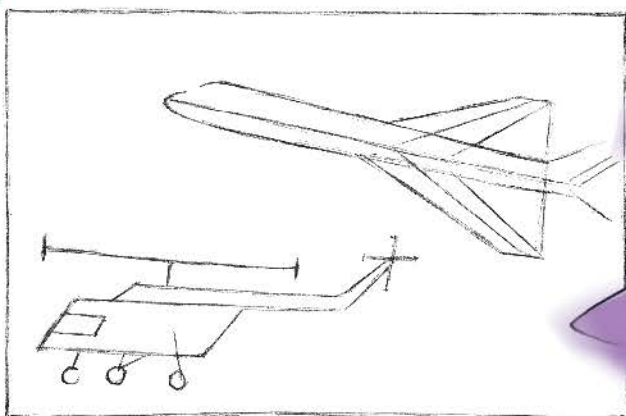


Vertolyot va samolyotlar harbiy, yo'lovchi ta-
shuvchi va boshqa vazifalarni bajaruvchi havo
transporti hisoblanadi.

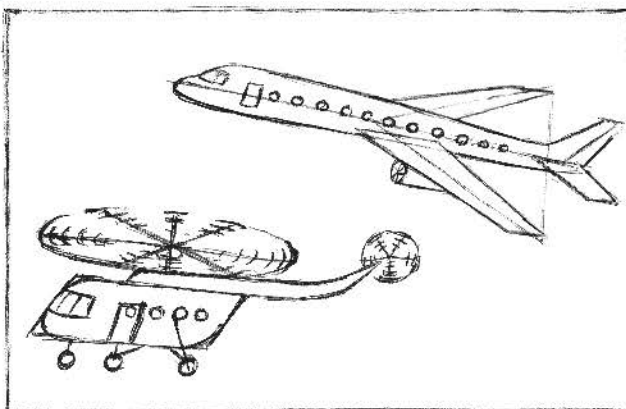
“Vertolyot va samolyotlar parvozi” mavzusida
kompozitsiya chizishda simmetriya va yordamchi
chiziqlardan foydalaning.

**“Vertolyot va samolyotlar parvozi”
mavzusida kompozitsiya chizish bosqichlari**

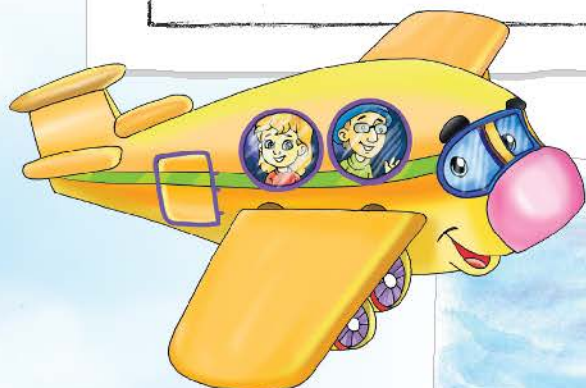
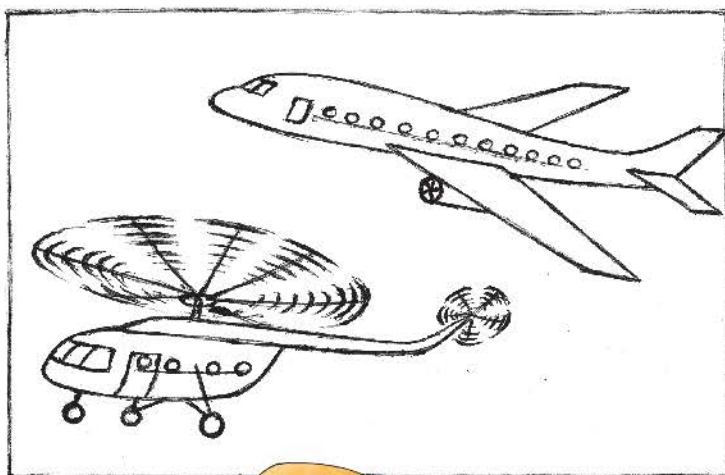
1



2



3



4



“Vertolyot va samolyotlar parvozi” mavzusidagi kompozitsiyani mashq daftariga chizing.



1. Vertolyot va samolyot qanday transport vositasi hisoblanadi?
2. Vertolyot va samolyot tuzilishidagi farqlarni ayting.



“Vertolyot va samolyotlar parvozi” kompozitsiyasini yakunlang.



32-mavzu

“DENGIZ KEMALARI” MAVZUSIDA KOMPOZITSIYA ISHLASH



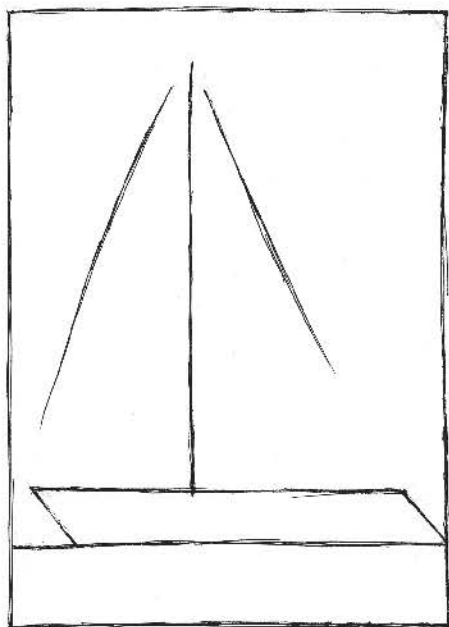
Kema – okean, dengiz kabi suv yo'llari orqali yuk va yo'lovchi tashuvchi transport turi. Dengiz kemalarining suvosti va suvusti turlari mavjud.

“Dengiz kemalari” mavzusidagi kompozitsiyani chizishda simmetriya va yordamchi chiziqlardan foydalaning.

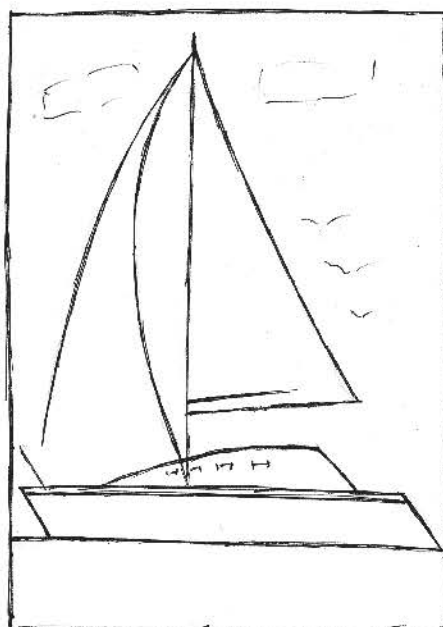


“Dengiz kemalari” mavzusida kompozitsiya chizish bosqichlari

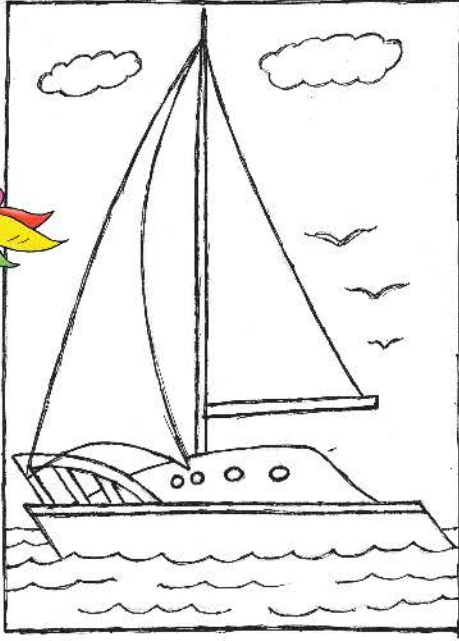
1



2



3



4



“Dengiz kemalari” mavzusidagi kompozitsiya-
yani mashq daftariga chizing.



1. Kema qanday transport turi?
2. Kemalarning qanday turlari mavjud?



“Dengiz kemalari” kompozitsiyasini
yakunlang.



33-mavzu. 4-nazorat ishi

**“TRANSPORT” MAVZUSIDA
KOMPOZITSIYA ISHLASH**

“Transport” mavzusida rasm chizing.

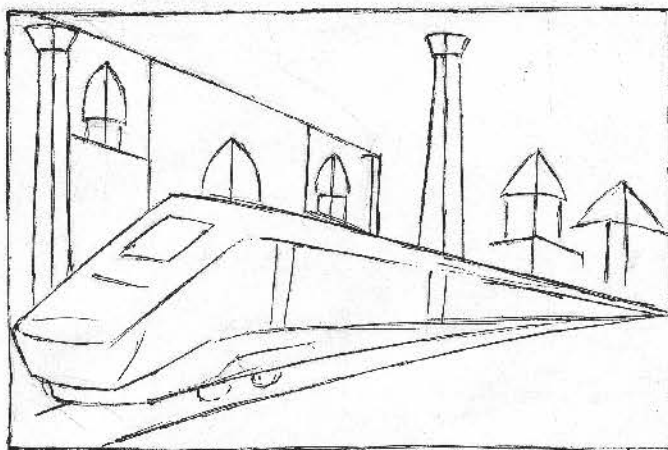




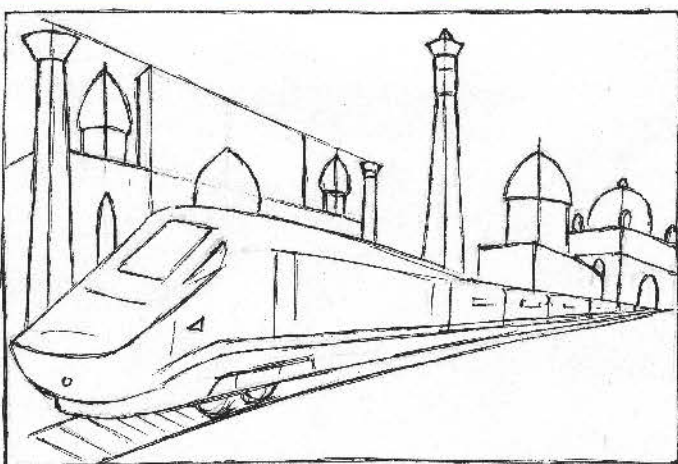
“Afrosiyob” tezyurar poyezdida tarixiy shaharlarga borganmisiz? Ko’rgan tarixiy shaharlaringizni esga oling. Tasavvuringiz asosida “Mening ta’tildagi sayohatim” mavzusida kompozitsiya ishlang.

**“Mening ta’tildagi sayohatim” mavzusida
kompozitsiya chizish bosqichlari**

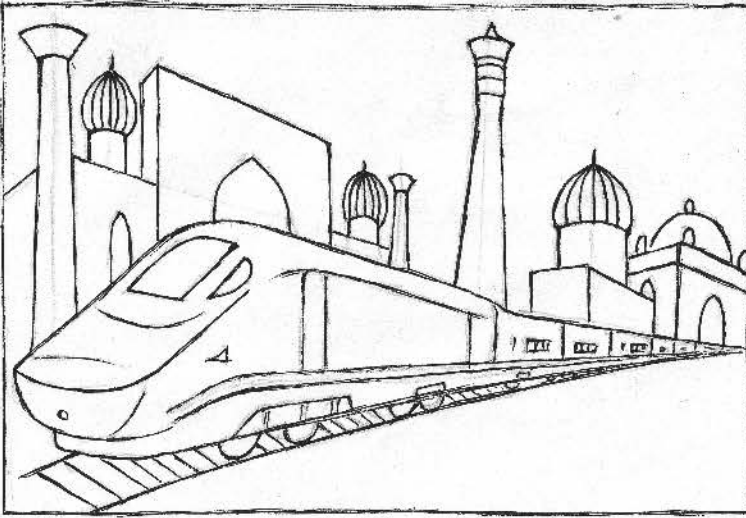
1



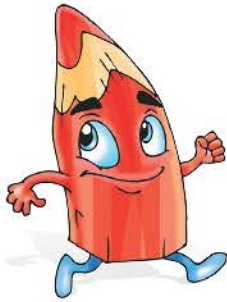
2



3



4



“Mening ta’tildagi sayohatim” mavzusidagi kompozitsiyani mashq daftariga chizing.



1. Ta’tilda qayerlarga sayohat qilasiz?
2. “Mening ta’tildagi sayohatim” mavzusidagi kompozitsiyaning birinchi bosqichida qanday ish bajaramiz?



Tasviriy san'at [Matn]: 2-sinf uchun darslik / K. Mirahmedov
[va boshq.]. – Toshkent: Respublika ta'lim markazi, 2021. – 80 b.

ISBN 978-9943-7300-2-1

UO'K 75(075.3)

KBK 74.268.51

O'quv nashri

Kudrat Miraxmedov, Barno Yunusova, Nurmon Berdiyev

TASVIRIY SAN'AT

*Umumiy o'rta ta'lim maktablarining
2-sinfi uchun darslik*

Rassomlar *Umid Sulaymonov,*
Dilnoza Mirxakimova
Muharrir *Xurshidbek Ibrohimov*
Badiiy muharrir *Sarvar Farmonov*
Texnik muharrir *Akmal Sulaymonov*
Musahhah *Mohinur Ablahakimova*
Dizayner *Dilmurod Mulla-Axunov*
Sahifalovchi *Alimardon Aqilov*

Bosishga 07.06.2021-yilda ruxsat etildi. Bichimi 60x84 $\frac{1}{8}$.

Montserrat garniturası. Keglı 18 shponlı. Ofset bosma.

Shartlı bosma tabog'ı 9,30. Nashriyot-hisob tabog'ı 8,92.

Adadı ____ nusxa. Buyurtma № ____.

“Kolorpak” MCHJ bosmaxonasida chop etildi.
Toshkent shahar, Yunusobod tumani, Yangishahar ko'chasi, 1-A uy.



COLORPACK

Ijaraga beriladigan darslik holatini ko'rsatuvchi jadval

№	O'quvchining ismi va familiyasi	O'quv yili	Darslikning olingandagi holati	Sinf rahbari-ning imzosi	Darslikning topshiril-gandagi holati	Sinf rahbari-ning imzosi
1.						
2.						
3.						
4.						
5.						
6.						

Darslik ijaraga berilib, o'quv yili yakunida qaytarib olinganda yuqoridagi jadval sinf rahbarlari tomonidan quyidagi baholash mezonlariga asosan to'ldiriladi:

Yangi	Darslikning birinchi marta foydalanishga berilgandagi holati.
Yaxshi	Muqova butun, darslikning asosiy qismidan ajralmagan. Barcha varaqlari bor, yirtilmagan, ko'chmagan, betlarida yozuv va chiziqlar yo'q.
Qoniqarli	Muqova ezilgan, birmuncha chizilib, chetlari yedirilgan, darslikning asosiy qismidan ajralish holati bor, lekin qoniqarli ta'mirlangan. Ko'chgan varaqlari qayta joylangan, ayrim betlariga chizilgan.
Qoniqarsiz	Muqova yirtilgan, ustiga chizilgan, asosiy qismidan ajralgan yoki butunlay yo'q, qoniqarsiz ta'mirlangan. Betlari yirtilgan, varaqlari yetishmaydi, chizib, bo'yab tashlangan. Darslikni tiklab bo'lmaydi.